

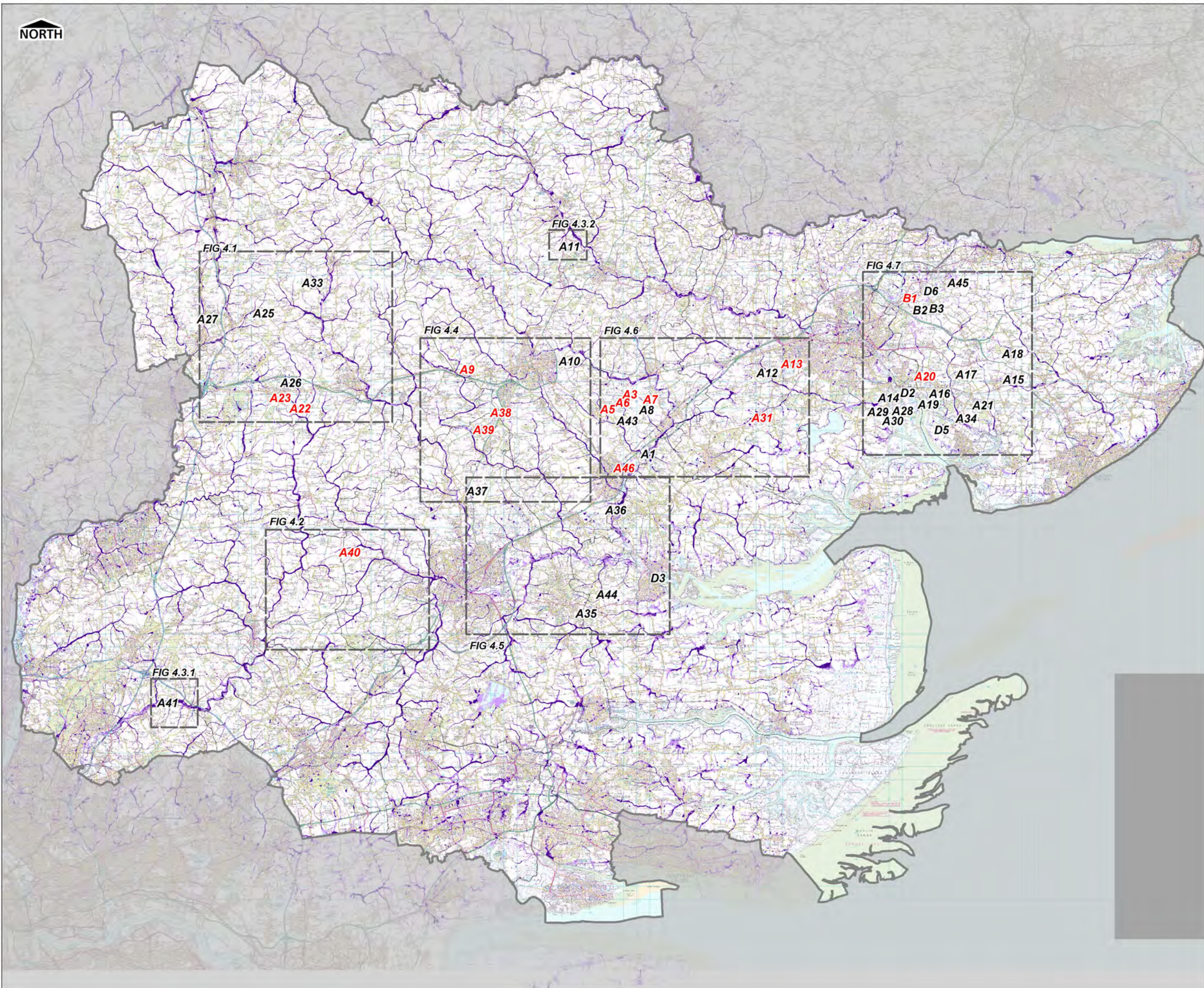
APPENDIX B OVERVIEW FIGURES

Figure 1	Essex County Study Area
Figure 2	Main Rivers
Figure 3.0 – 3.7	EA Flood Zones
Figure 4.0 – 4.7	EA Flood Map for Surface Water (FMfSW)
Figure 5	Geology
Figure 6.0 – 6.7	Groundwater Vulnerability & Source Protection Zones
Figure 7.0 – 7.7	EA Areas Susceptible to Groundwater Flooding (AStGWF)
Figure 8	Sewer Flooding Records
Figure 9	Flood Warning Areas
Figure 10	Local Flood Risk Management Strategy: Flood Risk Areas


Minerals Sites

Site Ref	Site Name	Figure 3 Fluvial & Tidal Flood Zones	Figure 4 Flood Map for Surface Water	Figure 7 Areas Susceptible to Groundwater Flooding	Mapped in Appendix C
A1	Coleman's Farm, Little Braxted Lane, Witham	Figure 3.6	Figure 4.6	Figure 7.6	✓
A2	Bradwell Quarry, Rivenhall Airfield	Figure 3.6	Figure 4.6	Figure 7.6	
A3	Bradwell Quarry, Rivenhall Airfield	Figure 3.6	Figure 4.6	Figure 7.6	
A4	Bradwell Quarry, Rivenhall Airfield	Figure 3.6	Figure 4.6	Figure 7.6	
A5	Bradwell Quarry, Rivenhall Airfield	Figure 3.6	Figure 4.6	Figure 7.6	✗
A6	Bradwell Quarry, Rivenhall Airfield	Figure 3.6	Figure 4.6	Figure 7.6	
A7	Bradwell Quarry, Rivenhall Airfield	Figure 3.6	Figure 4.6	Figure 7.6	
A8	Bradwell Quarry, Rivenhall Airfield	Figure 3.6	Figure 4.6	Figure 7.6	
A9	Broadfields Farm, Rayne	Figure 3.4	Figure 4.4	Figure 7.4	✓
A10	Covenbrook Hall Farm, Stisted	Figure 3.4	Figure 4.4	Figure 7.4	
A11		Figure 3.3.1	Figure 4.3.1	Figure 7.3.1	✗
A12	Bellhouse Farm South	Figure 3.6	Figure 4.6	Figure 7.6	
A13	Fiveways Fruit Farm	Figure 3.6	Figure 4.6	Figure 7.6	
A15	Admirals Fm, Great Bentley	Figure 3.7	Figure 4.7	Figure 7.7	
A16	Church Farm, Alresford	Figure 3.7	Figure 4.7	Figure 7.7	
A17	Frating Hall Farm, Frating	Figure 3.7	Figure 4.7	Figure 7.7	
					✓
A19	Lodge Farm, Alresford	Figure 3.7	Figure 4.7	Figure 7.7	
A20	Sunnymead, Elmstead & Heath Farms, Alresford	Figure 3.7	Figure 4.7	Figure 7.7	✓
	Thorrington Hall Farm, Thorrington	Figure 3.7			✓
A22	Little Bullocks Farm, Canfield – Area A	Figure 3.1	Figure 4.1	Figure 7.1	
A23	Little Bullocks Farm, Canfield – Area B	Figure 3.1	Figure 4.1	Figure 7.1	
A25	Elsenham Quarry, Elsenham	Figure 3.1	Figure 4.1	Figure 7.1	✗
					✓
A27	Land at Ugley, Ugley	Figure 3.1	Figure 4.1	Figure 7.1	
A28		Figure 3.7	Figure 4.7	Figure 7.7	✗
A29	30 Acre Field West, Fingringhoe	Figure 3.7	Figure 4.7	Figure 7.7	✗



A30	30 Acre Field South, Fingringhoe	Figure 3.7	Figure 4.7	Figure 7.7	x
					✓
					x
A45	Ardleigh Site A	Figure 3.7	Figure 4.7	Figure 7.7	✓
A46	Colemans Farm	Figure 3.6	Figure 4.6	Figure 7.6	✓
B1	Slough Fm, Ardleigh - Area 1	Figure 3.7	Figure 4.7	Figure 7.7	x
D2	Ballast Quay, Fingringhoe	Figure 3.7	Figure 4.7	Figure 7.7	✓
D3	Sadds Wharf, Maldon	Figure 3.5	Figure 4.5	Figure 7.5	✓
D5	Brightlingsea Quarry Wharf	Figure 3.7	Figure 4.7	Figure 7.7	✓
D6	Ardleigh Transhipment Site	Figure 3.7	Figure 4.7	Figure 7.7	x



LEGEND

-  Essex County Boundary
-  A123 Non-Selected Site
-  A123 Preferred Site

**Flood Map for Surface Water (FMfSW)
0.5% AEP (1 in 200 Year)**

-  Shallow (0.1m - 0.3m)
-  Deep (>0.3m)

USER NOTE

This map gives an indication of the broad areas likely to be at risk of surface water flooding. It is not suitable for use at an individual property scale due to the method used. Because of the way they have been produced and the fact that the extents are indicative, the Environment Agency surface water flood maps are not appropriate to act as the sole evidence for any specific planning decision (such as objecting to a planning application) at any scale without further supporting studies or evidence.


COPYRIGHT

This map is reproduced from Ordnance Survey material with the permission of Ordnance Survey on behalf of the controller of Her Majesty's Stationery Office © Crown copyright. Unauthorised reproduction infringes Crown copyright and may lead to prosecution or civil proceedings. Essex County Council Licence No. 100019602, 2011. Some features of this map are based on information provided by the Environment Agency. Copyright © Environment Agency 2011.


DRAWN BY RJ	CHECKED BY SR	PASSED BY SR	DATE NOV 2012
SCALE @ A3 1 : 250,000		ISSUING OFFICE London	

**MINERALS LOCAL PLAN LEVEL 1
STRATEGIC FLOOD RISK ASSESSMENT
[REVISION NOV 2012]**

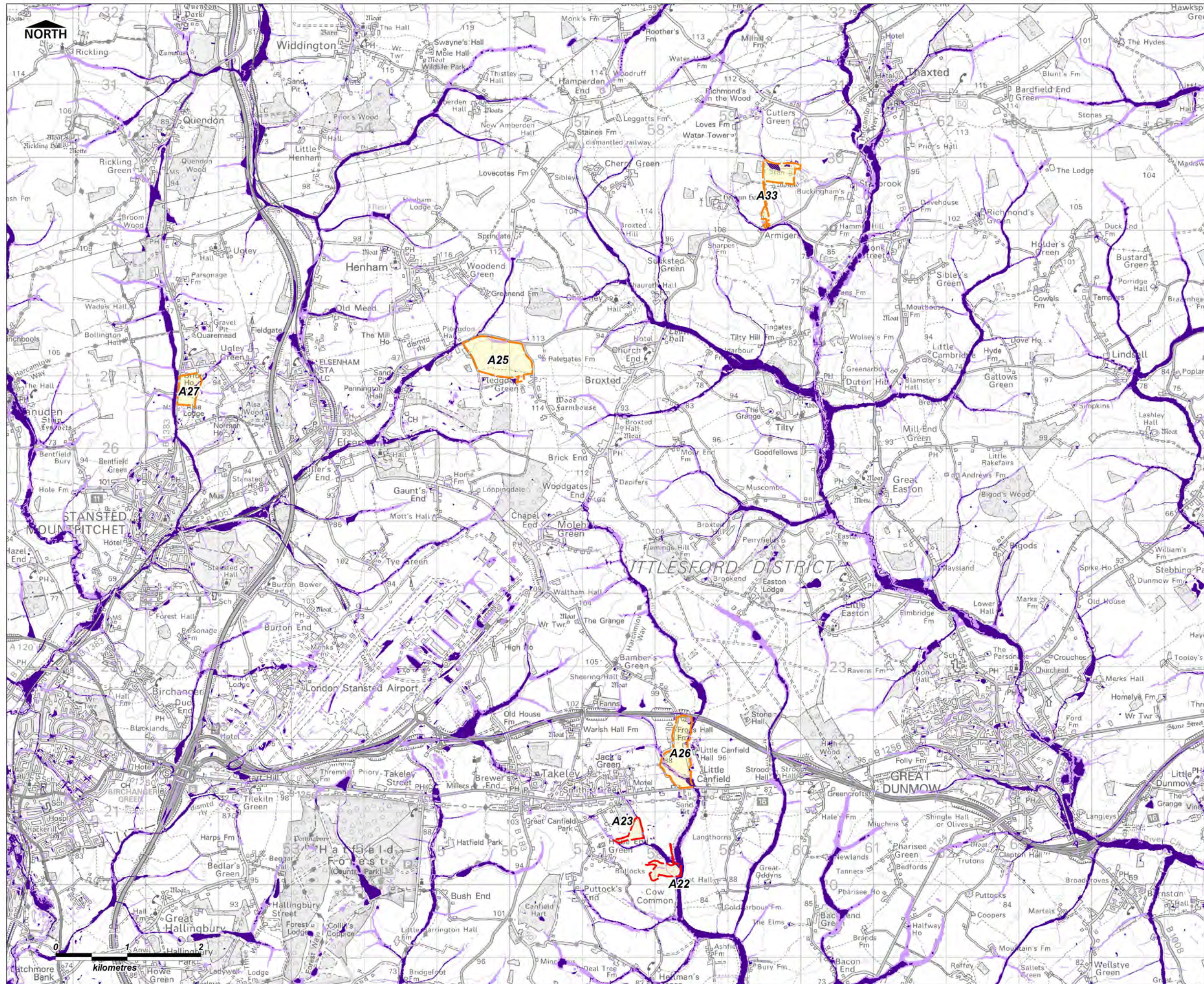
**FLOOD MAP FOR SURFACE WATER
0.5% AEP (1 IN 200YR)**

 Essex County Council
County Hall
Market Road
Chelmsford, CM1 1QH

URS Infrastructure and Environment UK Ltd
6-8 Greencoat Place
London, SW1P 1PL
Tel: (020) 7798 5000



DRAWING NUMBER
FIGURE 4.0



LEGEND

- Essex County Boundary
- Non-Selected Site
- Preferred Site

**Flood Map for Surface Water (FMfSW)
0.5% AEP (1 in 200 Year)**

- Shallow (0.1m - 0.3m)
- Deep (>0.3m)

USER NOTE

This map gives an indication of the broad areas likely to be at risk of surface water flooding. It is not suitable for use at an individual property scale due to the method used. Because of the way they have been produced and the fact that the extents are indicative, the Environment Agency surface water flood maps are not appropriate to act as the sole evidence for any specific planning decision (such as objecting to a planning application) at any scale without further supporting studies or evidence.



COPYRIGHT

This map is reproduced from Ordnance Survey material with the permission of Ordnance Survey on behalf of the controller of Her Majesty's Stationery Office © Crown copyright. Unauthorised reproduction infringes Crown copyright and may lead to prosecution or civil proceedings. Essex County Council Licence No. 100019602, 2011. Some features of this map are based on information provided by the Environment Agency. Copyright © Environment Agency 2011.

DRAWN BY	CHECKED BY	PASSED BY	DATE
RJ	SR	SR	NOV2012
SCALE @ A3		ISSUING OFFICE	
1 : 50,000		London	

**MINERALS LOCAL PLAN LEVEL 1
STRATEGIC FLOOD RISK ASSESSMENT
[REVISION NOV 2012]**

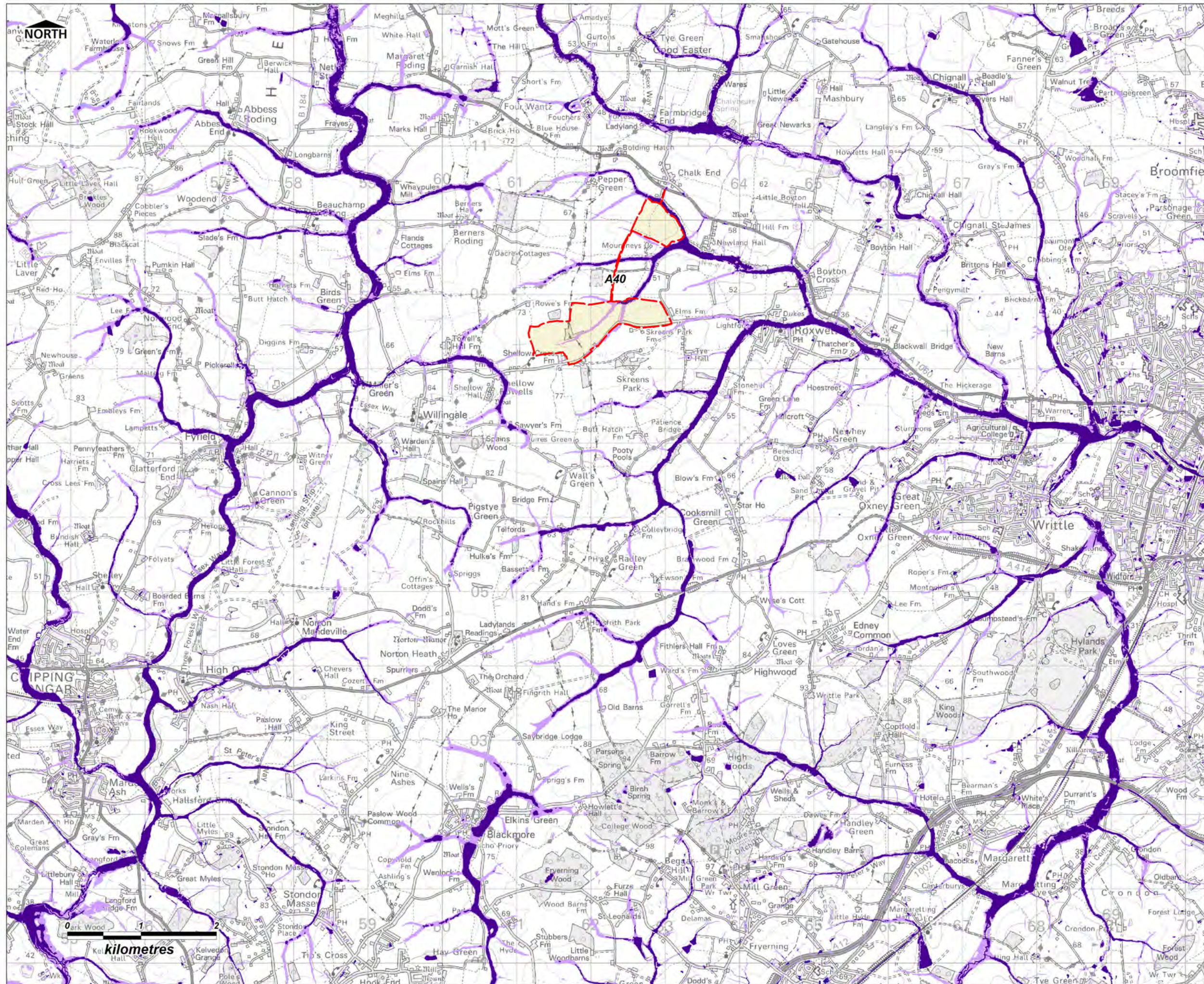
**FLOOD MAP FOR SURFACE WATER
0.5% AEP (1 IN 200YR)**

Essex County Council
County Hall
Market Road
Chelmsford, CM1 1QH

URS Infrastructure and Environment UK Ltd
6-8 Greencoat Place
London, SW1P 1PL
Tel: (020) 7798 5000

DRAWING NUMBER

FIGURE 4.1



LEGEND

- Essex County Boundary
- Non-Selected Site
- Preferred Site

Flood Map for Surface Water (FMfSW) 0.5% AEP (1 in 200 Year)

- Shallow (0.1m - 0.3m)
- Deep (>0.3m)

USER NOTE

This map gives an indication of the broad areas likely to be at risk of surface water flooding. It is not suitable for use at an individual property scale due to the method used. Because of the way they have been produced and the fact that the extents are indicative, the Environment Agency surface water flood maps are not appropriate to act as the sole evidence for any specific planning decision (such as objecting to a planning application) at any scale without further supporting studies or evidence.

OVERVIEW MAP

COPYRIGHT

This map is reproduced from Ordnance Survey material with the permission of Ordnance Survey on behalf of the controller of Her Majesty's Stationery Office © Crown copyright. Unauthorised reproduction infringes Crown copyright and may lead to prosecution or civil proceedings. Essex County Council Licence No. 100019602, 2011. Some features of this map are based on information provided by the Environment Agency. Copyright © Environment Agency 2011.

DRAWN BY	CHECKED BY	PASSED BY	DATE
RJ	SR	SR	NOV 2012

SCALE @ A3

1 : 50,000

ISSUING OFFICE

London

MINERALS LOCAL PLAN LEVEL 1 STRATEGIC FLOOD RISK ASSESSMENT [REVISION NOV 2012]

FLOOD MAP FOR SURFACE WATER 0.5% AEP (1 IN 200YR)

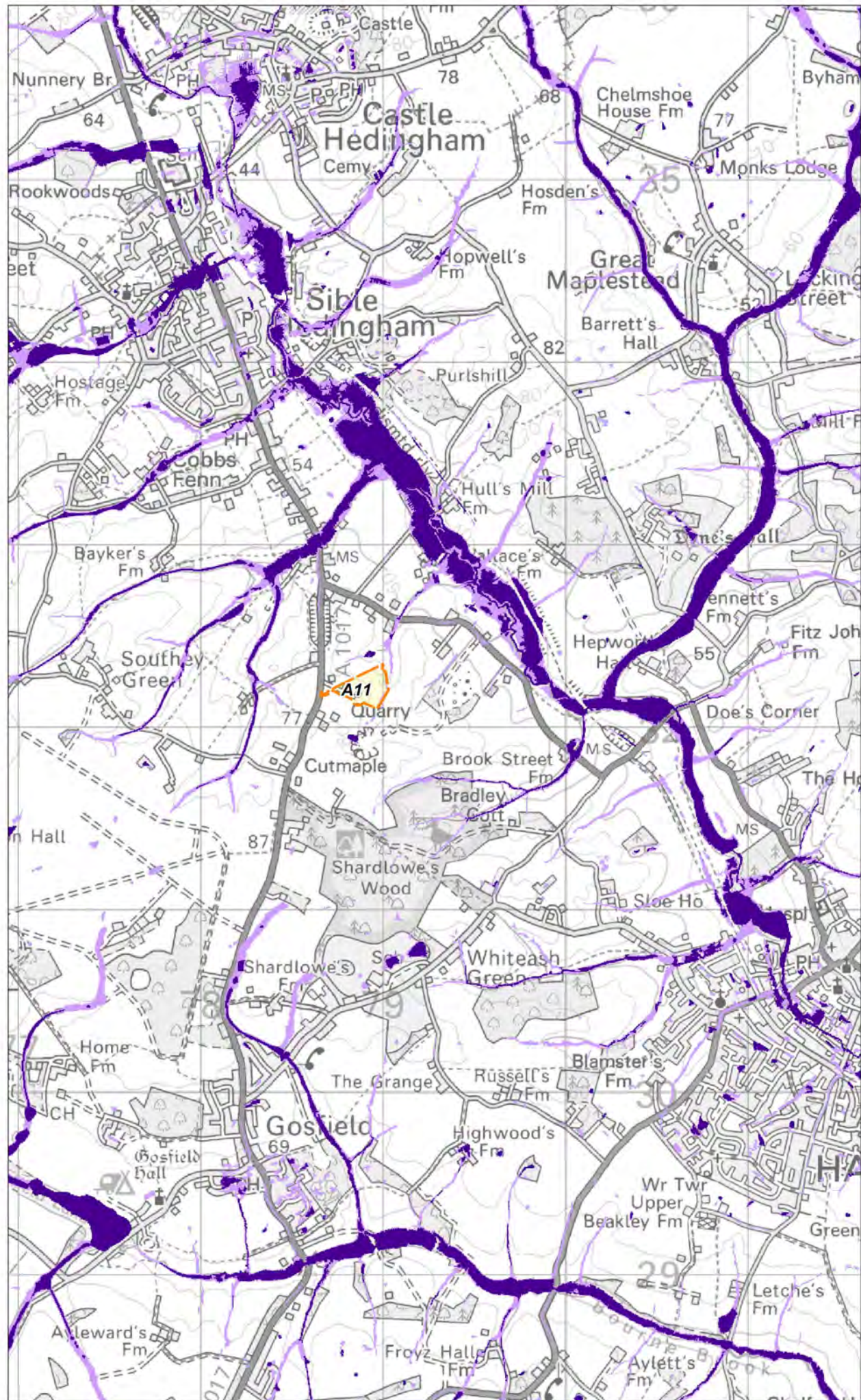
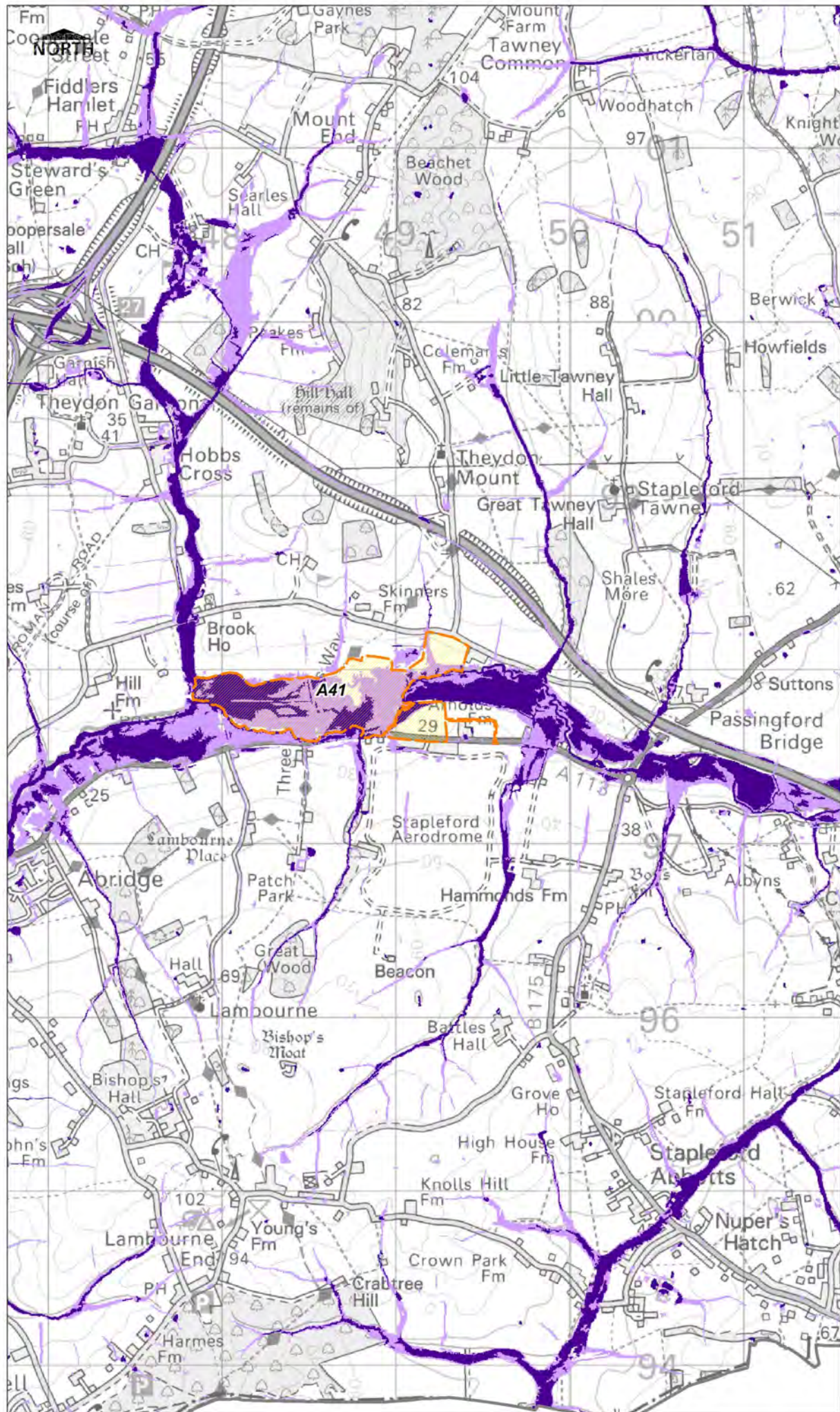
Essex County Council
County Hall
Market Road
Chelmsford, CM1 1QH

URS Infrastructure and Environment UK Ltd
6-8 Greencoat Place
London, SW1P 1PL
Tel: (020) 7798 5000

DRAWING NUMBER

FIGURE 4.2

REV 05



LEGEND

- Essex County Boundary
- Non-Selected Site
- Preferred Site

**Flood Map for Surface Water (FMfSW)
0.5% AEP (1 in 200 Year)**

- Shallow (0.1m - 0.3m)
- Deep (>0.3m)

USER NOTE

This map gives an indication of the broad areas likely to be at risk of surface water flooding. It is not suitable for use at an individual property scale due to the method used. Because of the way they have been produced and the fact that the extents are indicative, the Environment Agency surface water flood maps are not appropriate to act as the sole evidence for any specific planning decision (such as objecting to a planning application) at any scale without further supporting studies or evidence.

OVERVIEW MAP

COPYRIGHT

This map is reproduced from Ordnance Survey material with the permission of Ordnance Survey on behalf of the controller of Her Majesty's Stationery Office © Crown copyright. Unauthorised reproduction infringes Crown copyright and may lead to prosecution or civil proceedings. Essex County Council Licence No. 100019602, 2011. Some features of this map are based on information provided by the Environment Agency. Copyright © Environment Agency 2011.

DRAWN BY	CHECKED BY	PASSED BY	DATE
RJ	SR	SR	NOV 2012

SCALE @ A3 1 : 30,000 **ISSUING OFFICE** London

**MINERALS LOCAL PLAN LEVEL 1
STRATEGIC FLOOD RISK ASSESSMENT
[REVISION NOV 2012]**

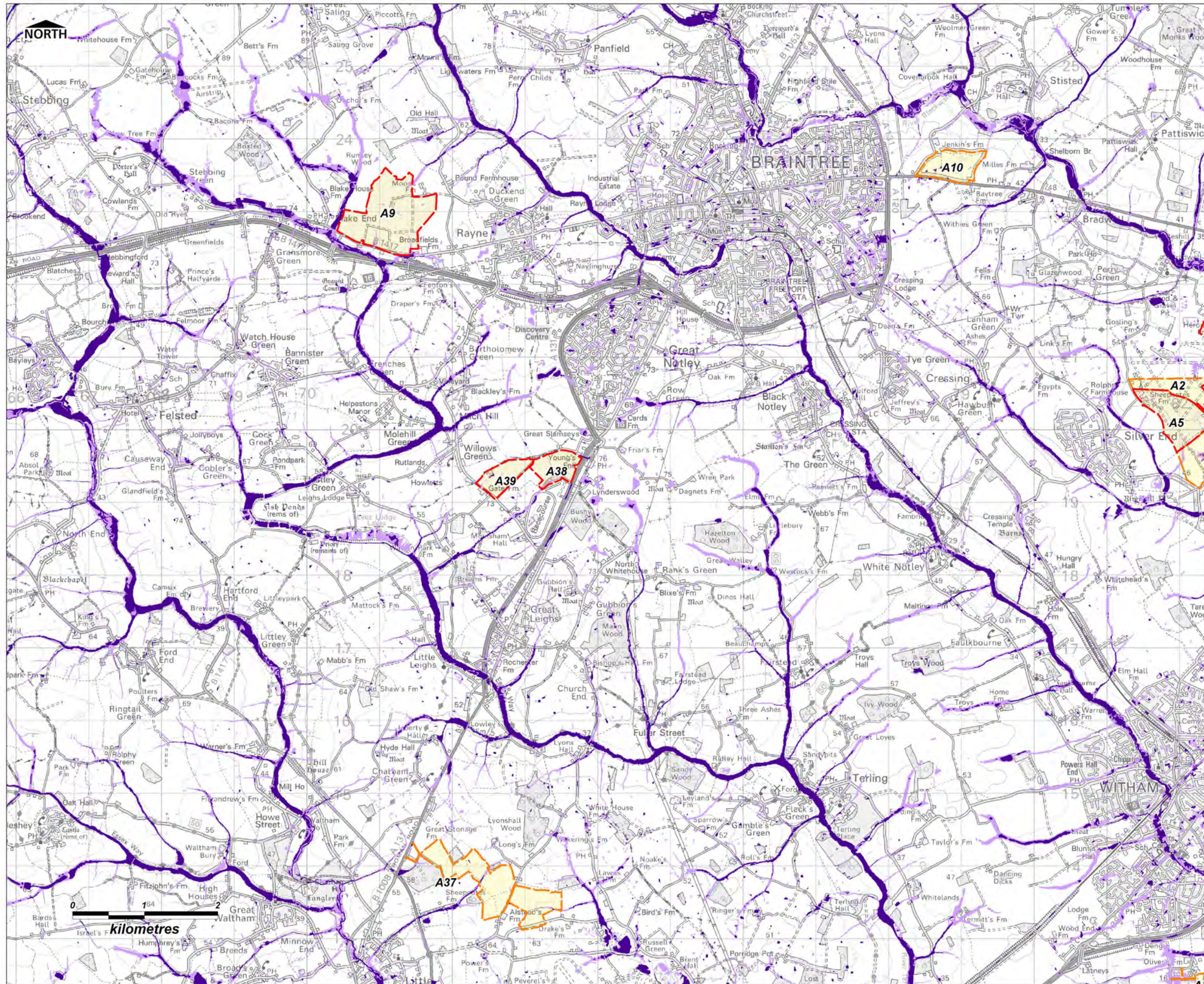
**FLOOD MAP FOR SURFACE WATER
0.5% AEP (1 IN 200YR)**

Essex County Council
County Hall
Market Road
Chelmsford, CM1 1QH

URS Infrastructure and Environment UK Ltd
6-8 Greencoat Place
London, SW1P 1PL
Tel: (020) 7798 5000

DRAWING NUMBER **FIGURE 4.3**

REV 05



LEGEND

- Essex County Boundary
- Non-Selected Site
- Preferred Site

Flood Map for Surface Water (FMfSW) 0.5% AEP (1 in 200 Year)

- Shallow (0.1m - 0.3m)
- Deep (>0.3m)

USER NOTE

This map gives an indication of the broad areas likely to be at risk of surface water flooding. It is not suitable for use at an individual property scale due to the method used. Because of the way they have been produced and the fact that the extents are indicative, the Environment Agency surface water flood maps are not appropriate to act as the sole evidence for any specific planning decision (such as objecting to a planning application) at any scale without further supporting studies or evidence.

OVERVIEW MAP

COPYRIGHT

This map is reproduced from Ordnance Survey material with the permission of Ordnance Survey on behalf of the controller of Her Majesty's Stationery Office © Crown copyright. Unauthorised reproduction infringes Crown copyright and may lead to prosecution or civil proceedings. Essex County Council Licence No. 100019602, 2011. Some features of this map are based on information provided by the Environment Agency. Copyright © Environment Agency 2011.

DRAWN BY	CHECKED BY	PASSED BY	DATE
RJ	SR	SR	NOV 2012

SCALE @ A3 1 : 50,000 **ISSUING OFFICE** London

MINERALS LOCAL PLAN LEVEL 1 STRATEGIC FLOOD RISK ASSESSMENT [REVISION NOV 2012]

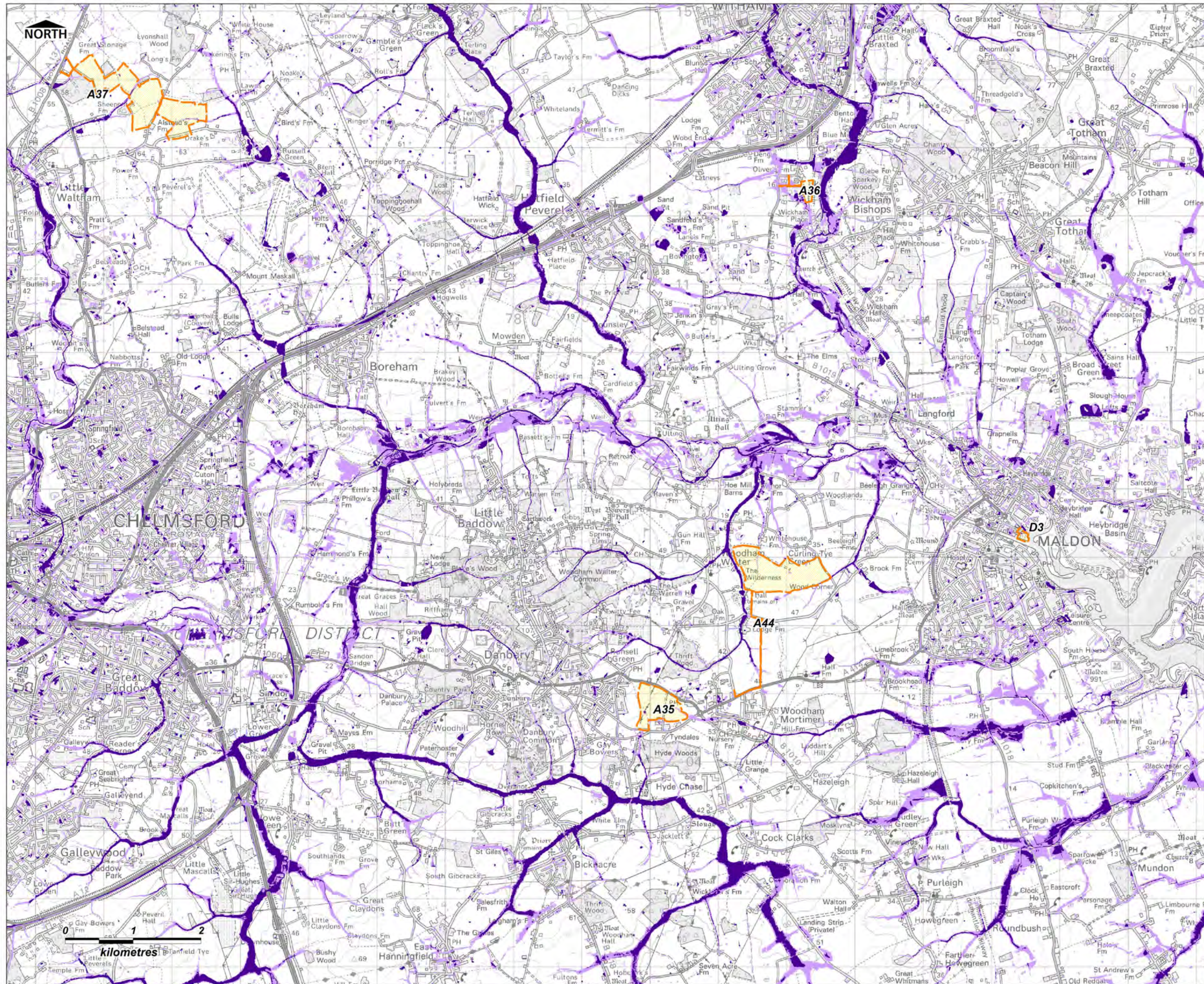
FLOOD MAP FOR SURFACE WATER 0.5% AEP (1 IN 200YR)

Essex County Council
County Hall
Market Road
Chelmsford, CM1 1QH

URS Infrastructure and Environment UK Ltd
6-8 Greencoat Place
London, SW1P 1PL
Tel: (020) 7798 5000

DRAWING NUMBER **FIGURE 4.4**

REV 04



LEGEND

- Essex County Boundary
- Non-Selected Site
- Preferred Site

**Flood Map for Surface Water (FMfSW)
0.5% AEP (1 in 200 Year)**

- Shallow (0.1m - 0.3m)
- Deep (>0.3m)

USER NOTE

This map gives an indication of the broad areas likely to be at risk of surface water flooding. It is not suitable for use at an individual property scale due to the method used. Because of the way they have been produced and the fact that the extents are indicative, the Environment Agency surface water flood maps are not appropriate to act as the sole evidence for any specific planning decision (such as objecting to a planning application) at any scale without further supporting studies or evidence.

OVERVIEW MAP

COPYRIGHT

This map is reproduced from Ordnance Survey material with the permission of Ordnance Survey on behalf of the controller of Her Majesty's Stationery Office © Crown copyright. Unauthorised reproduction infringes Crown copyright and may lead to prosecution or civil proceedings. Essex County Council Licence No. 100019602, 2011. Some features of this map are based on information provided by the Environment Agency. Copyright © Environment Agency 2011.

DRAWN BY	CHECKED BY	PASSED BY	DATE
RJ	SR	SR	NOV 2012

SCALE @ A3: 1 : 50,000 ISSUING OFFICE: London

**MINERALS LOCAL PLAN LEVEL 1
STRATEGIC FLOOD RISK ASSESSMENT
[REVISION NOV 2012]**

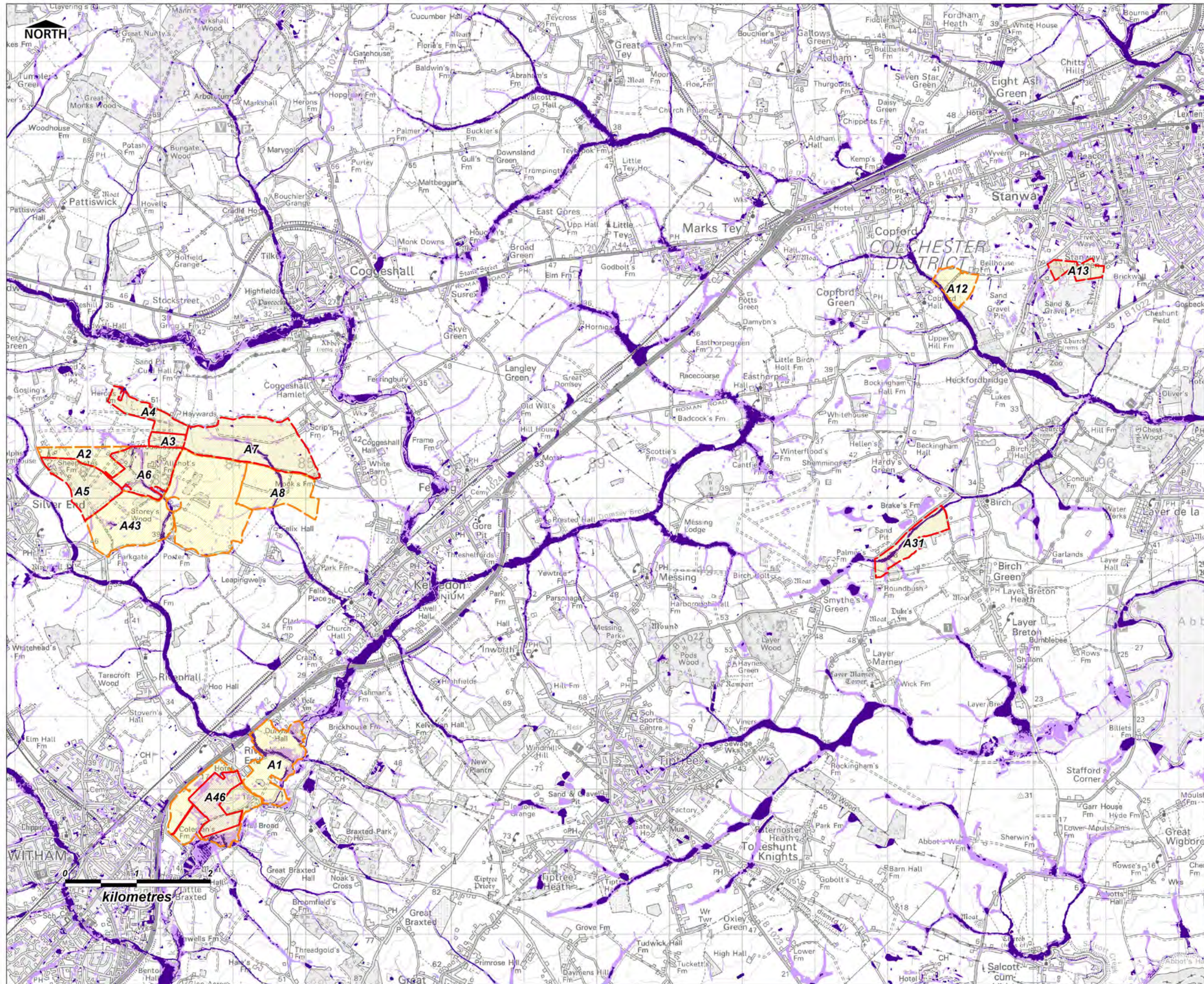
**FLOOD MAP FOR SURFACE WATER
0.5% AEP (1 IN 200YR)**

Essex County Council
County Hall
Market Road
Chelmsford, CM1 1QH

URS Infrastructure and Environment
6-8 Greencoat Place
London, SW1P 1PL
Tel: (020) 7798 5000

DRAWING NUMBER: **FIGURE 4.5**

REV 04



LEGEND

- Essex County Boundary
- Non-Selected Site
- Preferred Site

**Flood Map for Surface Water (FMfSW)
0.5% AEP (1 in 200 Year)**

- Shallow (0.1m - 0.3m)
- Deep (>0.3m)

USER NOTE

This map gives an indication of the broad areas likely to be at risk of surface water flooding. It is not suitable for use at an individual property scale due to the method used. Because of the way they have been produced and the fact that the extents are indicative, the Environment Agency surface water flood maps are not appropriate to act as the sole evidence for any specific planning decision (such as objecting to a planning application) at any scale without further supporting studies or evidence.

OVERVIEW MAP

COPYRIGHT

This map is reproduced from Ordnance Survey material with the permission of Ordnance Survey on behalf of the controller of Her Majesty's Stationery Office © Crown copyright. Unauthorised reproduction infringes Crown copyright and may lead to prosecution or civil proceedings. Essex County Council Licence No. 100019602, 2011. Some features of this map are based on information provided by the Environment Agency. Copyright © Environment Agency 2011.

DRAWN BY	CHECKED BY	PASSED BY	DATE
RJ	SR	SR	NOV 2012

SCALE @ A3: 1 : 50,000

ISSUING OFFICE: London

**MINERALS LOCAL PLAN LEVEL 1
STRATEGIC FLOOD RISK ASSESSMENT
[REVISION NOV 2012]**

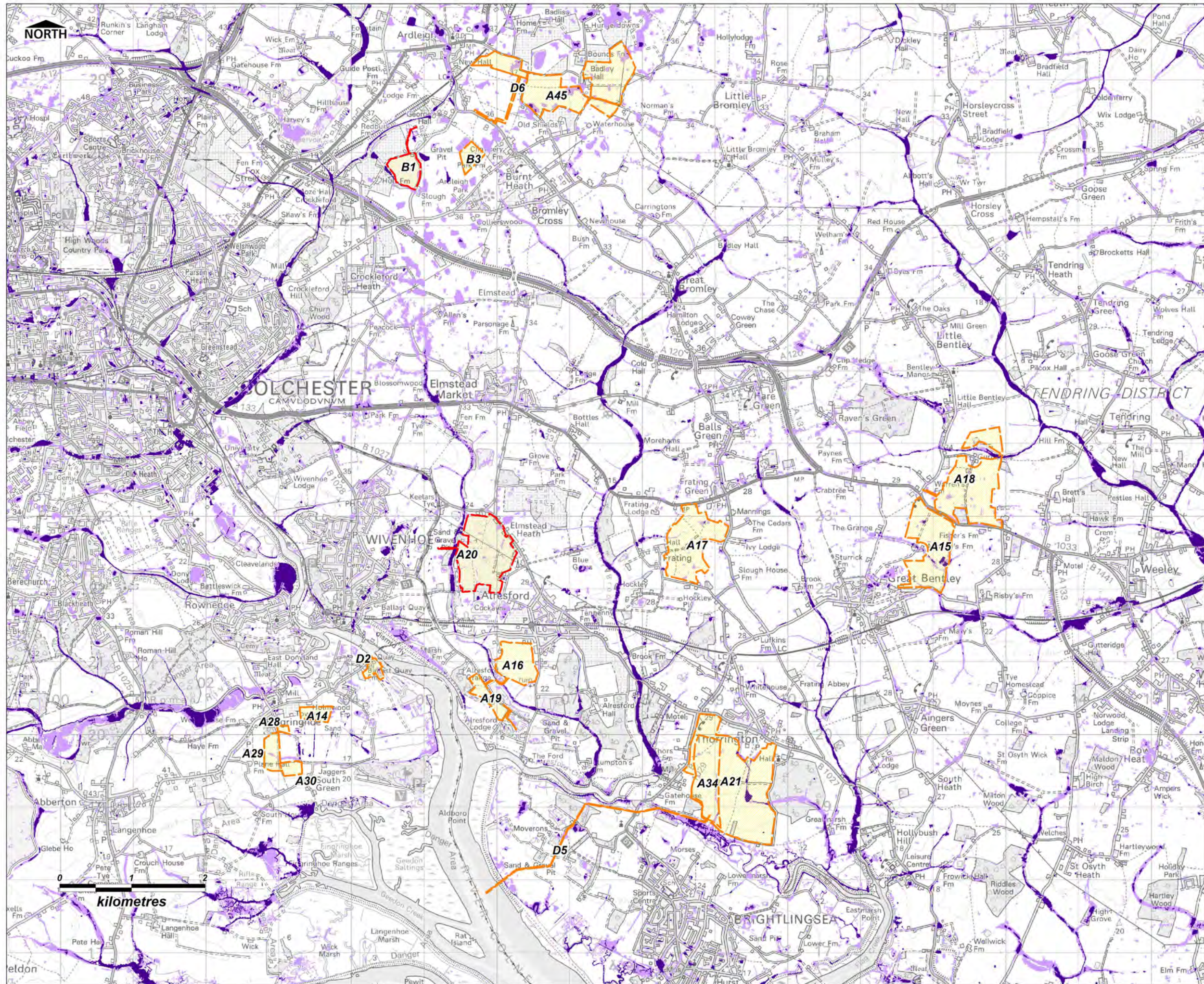
**FLOOD MAP FOR SURFACE WATER
0.5% AEP (1 IN 200YR)**

Essex County Council
County Hall
Market Road
Chelmsford, CM1 1QH

URS Infrastructure and Environment UK Ltd
6-8 Greencoat Place
London, SW1P 1PL
Tel: (020) 7798 5000

DRAWING NUMBER: **FIGURE 4.6**

REV 05



LEGEND

- Essex County Boundary
- Non-Selected Site
- Preferred Site

**Flood Map for Surface Water (FMfSW)
0.5% AEP (1 in 200 Year)**

- Shallow (0.1m - 0.3m)
- Deep (>0.3m)

USER NOTE

This map gives an indication of the broad areas likely to be at risk of surface water flooding. It is not suitable for use at an individual property scale due to the method used. Because of the way they have been produced and the fact that the extents are indicative, the Environment Agency surface water flood maps are not appropriate to act as the sole evidence for any specific planning decision (such as objecting to a planning application) at any scale without further supporting studies or evidence.

OVERVIEW MAP

COPYRIGHT

This map is reproduced from Ordnance Survey material with the permission of Ordnance Survey on behalf of the controller of Her Majesty's Stationery Office © Crown copyright. Unauthorised reproduction infringes Crown copyright and may lead to prosecution or civil proceedings. Essex County Council Licence No. 100019602, 2011. Some features of this map are based on information provided by the Environment Agency. Copyright © Environment Agency 2011.

DRAWN BY	CHECKED BY	PASSED BY	DATE
RJ	SR	SR	NOV 2012

SCALE @ A3 1 : 50,000 **ISSUING OFFICE** London

**MINERALS LOCAL PLAN LEVEL 1
STRATEGIC FLOOD RISK ASSESSMENT
[REVISION NOV 2012]**

**FLOOD MAP FOR SURFACE WATER
0.5% AEP (1 IN 200YR)**

Essex County Council
County Hall
Market Road
Chelmsford, CM1 1QH

URS Infrastructure and Environment UK Ltd
6-8 Greencoat Place
London, SW1P 1PL
Tel: (020) 7798 5000

DRAWING NUMBER **FIGURE 4.7**

REV 05