

**APPENDIX B OVERVIEW FIGURES**

<b>Figure 1</b>	Essex County Study Area
<b>Figure 2</b>	Main Rivers
<b>Figure 3.0 – 3.7</b>	EA Flood Zones
<b>Figure 4.0 – 4.7</b>	EA Flood Map for Surface Water (FMfSW)
<b>Figure 5</b>	Geology
<b>Figure 6.0 – 6.7</b>	Groundwater Vulnerability & Source Protection Zones
<b>Figure 7.0 – 7.7</b>	EA Areas Susceptible to Groundwater Flooding (AStGWF)
<b>Figure 8</b>	Sewer Flooding Records
<b>Figure 9</b>	Flood Warning Areas
<b>Figure 10</b>	Local Flood Risk Management Strategy: Flood Risk Areas

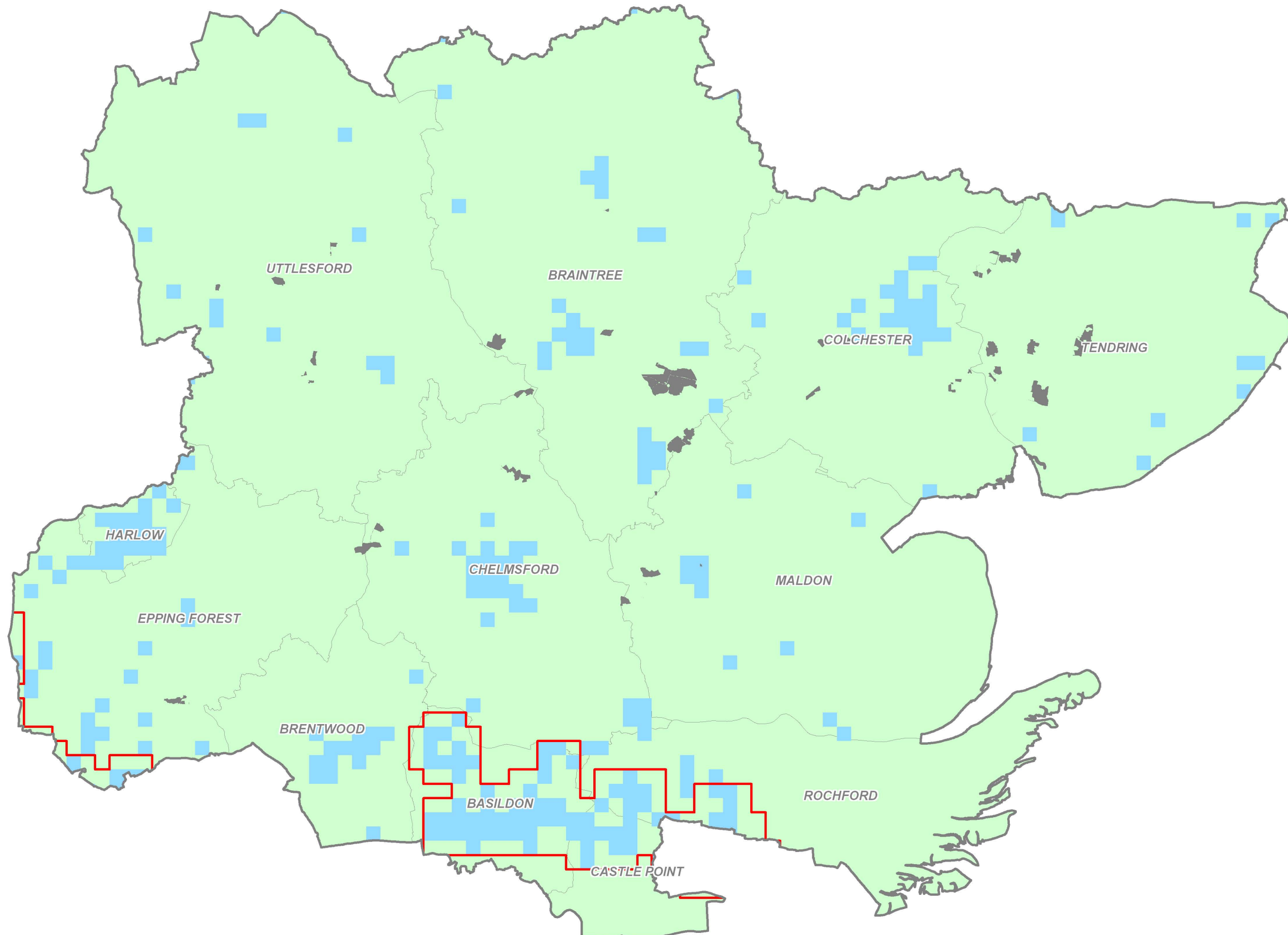
**Minerals Sites**

Site Ref	Site Name	Figure 3 – Fluvial & Tidal Flood Zones	Figure 4 – Flood Map for Surface Water	Figure 7 – Areas Susceptible to Groundwater Flooding	Mapped in Appendix C
A1	Coleman's Farm, Little Braxted Lane, Witham	Figure 3.6	Figure 4.6	Figure 7.6	✓
A2	Bradwell Quarry, Rivenhall Airfield	Figure 3.6	Figure 4.6	Figure 7.6	✗
A3	Bradwell Quarry, Rivenhall Airfield	Figure 3.6	Figure 4.6	Figure 7.6	✗
A4	Bradwell Quarry, Rivenhall Airfield	Figure 3.6	Figure 4.6	Figure 7.6	✗
A5	Bradwell Quarry, Rivenhall Airfield	Figure 3.6	Figure 4.6	Figure 7.6	✗
A6	Bradwell Quarry, Rivenhall Airfield	Figure 3.6	Figure 4.6	Figure 7.6	✗
A7	Bradwell Quarry, Rivenhall Airfield	Figure 3.6	Figure 4.6	Figure 7.6	✗
A8	Bradwell Quarry, Rivenhall Airfield	Figure 3.6	Figure 4.6	Figure 7.6	✗
A9	Broadfields Farm, Rayne	Figure 3.4	Figure 4.4	Figure 7.4	✓
A10	Covenbrook Hall Farm, Stisted	Figure 3.4	Figure 4.4	Figure 7.4	✗
A11	Tile Kiln, Valley Farm, Sible Hedingham	Figure 3.3.1	Figure 4.3.1	Figure 7.3.1	✗
A12	Bellhouse Farm South	Figure 3.6	Figure 4.6	Figure 7.6	✓
A13	Fiveways Fruit Farm	Figure 3.6	Figure 4.6	Figure 7.6	✗
A14	Holmwood Farm	Figure 3.7	Figure 4.7	Figure 7.7	✗
A15	Admirals Fm, Great Bentley	Figure 3.7	Figure 4.7	Figure 7.7	✗
A16	Church Farm, Alresford	Figure 3.7	Figure 4.7	Figure 7.7	✓
A17	Frating Hall Farm, Frating	Figure 3.7	Figure 4.7	Figure 7.7	✗
A18	Gurnhams, Little Bentley	Figure 3.7	Figure 4.7	Figure 7.7	✓
A19	Lodge Farm, Alresford	Figure 3.7	Figure 4.7	Figure 7.7	✗
A20	Sunnymead, Elmstead & Heath Farms, Alresford	Figure 3.7	Figure 4.7	Figure 7.7	✓
A21	Thorrington Hall Farm, Thorrington	Figure 3.7	Figure 4.7	Figure 7.7	✓
A22	Little Bullocks Farm, Canfield – Area A	Figure 3.1	Figure 4.1	Figure 7.1	✓
A23	Little Bullocks Farm, Canfield – Area B	Figure 3.1	Figure 4.1	Figure 7.1	✗
A25	Elsenham Quarry, Elsenham	Figure 3.1	Figure 4.1	Figure 7.1	✗
A26	Frogs Hall, Takeley	Figure 3.1	Figure 4.1	Figure 7.1	✓
A27	Land at Ugley, Ugley	Figure 3.1	Figure 4.1	Figure 7.1	✓
A28	Tower Field Western Extension, Fingringhoe	Figure 3.7	Figure 4.7	Figure 7.7	✗
A29	30 Acre Field West, Fingringhoe	Figure 3.7	Figure 4.7	Figure 7.7	✗

A30	30 Acre Field South, Fingringhoe	Figure 3.7	Figure 4.7	Figure 7.7	✘
A31	Birch Extraction, Colchester	Figure 3.6	Figure 4.6	Figure 7.6	✓
A33	Armigers Farm	Figure 3.1	Figure 4.1	Figure 7.1	✘
A34	Thorrington Hall Farm	Figure 3.7	Figure 4.7	Figure 7.7	✓
A35	Tyndales Farm, Danbury	Figure 3.5	Figure 4.5	Figure 7.5	✘
A36	Olivers Nurseries	Figure 3.5	Figure 4.5	Figure 7.5	✘
A37	Alsteads Farm	Figure 3.4	Figure 4.4	Figure 7.4	✘
A38	Blackley Quarry, Gate Farm Site 1	Figure 3.4	Figure 4.4	Figure 7.4	✘
A39	Blackley Quarry, Gate Farm, Site 2	Figure 3.4	Figure 4.4	Figure 7.4	✘
A40	Shellow Cross Farm	Figure 3.2	Figure 4.2	Figure 7.2	✓
A41	Patch Park Farm	Figure 3.3.1	Figure 4.3.1	Figure 7.3.1	✓
A43	Parkgate Farm West	Figure 3.6	Figure 4.6	Figure 7.6	✘
A44	White House Farm	Figure 3.5	Figure 4.5	Figure 7.5	✓
A45	Ardleigh Site A	Figure 3.7	Figure 4.7	Figure 7.7	✓
A46	Colemans Farm	Figure 3.6	Figure 4.6	Figure 7.6	✓
B1	Slough Fm, Ardleigh - Area 1	Figure 3.7	Figure 4.7	Figure 7.7	✘
B3	Slough Fm, Ardleigh - Area 3	Figure 3.7	Figure 4.7	Figure 7.7	✘
D2	Ballast Quay, Fingringhoe	Figure 3.7	Figure 4.7	Figure 7.7	✓
D3	Sadds Wharf, Maldon	Figure 3.5	Figure 4.5	Figure 7.5	✓
D5	Brightlingsea Quarry Wharf	Figure 3.7	Figure 4.7	Figure 7.7	✓
D6	Ardleigh Transhipment Site	Figure 3.7	Figure 4.7	Figure 7.7	✘



NORTH



**LEGEND**

-  Essex County Boundary
-  Indicative Flood Risk Areas
-  Places Above Flood Risk Threshold
-  Minerals Sites

**USE NOTE**

Places Above Flood Risk Thresholds are 1km grid squares where at least one of the following flood risk indicators is above the threshold given below:

1. Number of People >200
2. Critical Services >1
3. Number of Non-Residential Properties >20

Indicators calculated using the EA's detailed method counting (based on property outlines) for the Flood Map for Surface Water deep (1 in 200 year annual probability).

Indicative Flood Risk Areas are based on clusters formed from all 3km squares that contain 5 or more Places above the Flood Risk Thresholds (1km squares) that are touching.

**COPYRIGHT**


This map is reproduced from Ordnance Survey material with the permission of Ordnance Survey on behalf of the controller of Her Majesty's Stationery Office © Crown copyright. Unauthorised reproduction infringes Crown copyright and may lead to prosecution or civil proceedings. Essex County Council Licence No. 100019602, 2011. Some features of this map are based on information provided by the Environment Agency. Copyright © Environment Agency 2011.

DRAWN BY	CHECKED BY	PASSED BY	DATE
SL	EG	EG	OCT 2012

SCALE @ A3	ISSUING OFFICE
1 : 250,000	London

MINERALS LOCAL PLAN LEVEL ONE  
STRATEGIC FLOOD RISK ASSESSMENT  
[REVISION OCT 2012]

ESSEX LFRMS  
FLOOD RISK AREAS

 Essex County Council  
County Hall  
Market Road  
Chelmsford, CM1 1QH

URS Infrastructure and Environment UK Ltd  
6-8 Greencoat Place  
London, SW1P 1PL  
Tel: (020) 7798 5000



DRAWING NUMBER

**FIGURE 10**

REV 04