

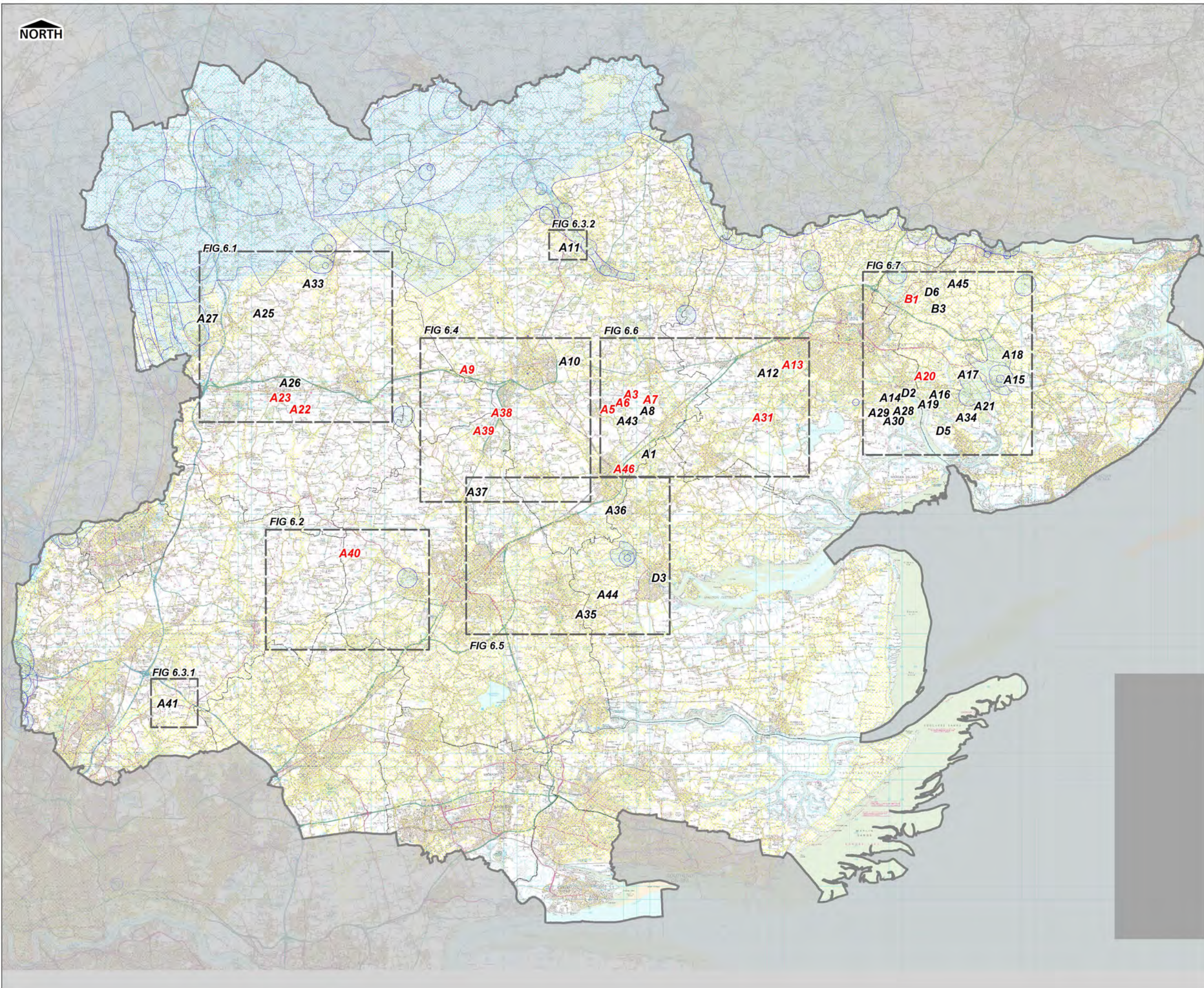
APPENDIX B OVERVIEW FIGURES

Figure 1	Essex County Study Area
Figure 2	Main Rivers
Figure 3.0 – 3.7	EA Flood Zones
Figure 4.0 – 4.7	EA Flood Map for Surface Water (FMfSW)
Figure 5	Geology
Figure 6.0 – 6.7	Groundwater Vulnerability & Source Protection Zones
Figure 7.0 – 7.7	EA Areas Susceptible to Groundwater Flooding (AStGWF)
Figure 8	Sewer Flooding Records
Figure 9	Flood Warning Areas
Figure 10	Local Flood Risk Management Strategy: Flood Risk Areas

Minerals Sites

Site Ref	Site Name	Figure 3 – Fluvial & Tidal Flood Zones	Figure 4 – Flood Map for Surface Water	Figure 7 – Areas Susceptible to Groundwater Flooding	Mapped in Appendix C
A1	Coleman's Farm, Little Braxted Lane, Witham	Figure 3.6	Figure 4.6	Figure 7.6	✓
A2	Bradwell Quarry, Rivenhall Airfield	Figure 3.6	Figure 4.6	Figure 7.6	✗
A3	Bradwell Quarry, Rivenhall Airfield	Figure 3.6	Figure 4.6	Figure 7.6	✗
A4	Bradwell Quarry, Rivenhall Airfield	Figure 3.6	Figure 4.6	Figure 7.6	✗
A5	Bradwell Quarry, Rivenhall Airfield	Figure 3.6	Figure 4.6	Figure 7.6	✗
A6	Bradwell Quarry, Rivenhall Airfield	Figure 3.6	Figure 4.6	Figure 7.6	✗
A7	Bradwell Quarry, Rivenhall Airfield	Figure 3.6	Figure 4.6	Figure 7.6	✗
A8	Bradwell Quarry, Rivenhall Airfield	Figure 3.6	Figure 4.6	Figure 7.6	✗
A9	Broadfields Farm, Rayne	Figure 3.4	Figure 4.4	Figure 7.4	✓
A10	Covenbrook Hall Farm, Stisted	Figure 3.4	Figure 4.4	Figure 7.4	✗
A11	Tile Kiln, Valley Farm, Sible Hedingham	Figure 3.3.1	Figure 4.3.1	Figure 7.3.1	✗
A12	Bellhouse Farm South	Figure 3.6	Figure 4.6	Figure 7.6	✓
A13	Fiveways Fruit Farm	Figure 3.6	Figure 4.6	Figure 7.6	✗
A14	Holmwood Farm	Figure 3.7	Figure 4.7	Figure 7.7	✗
A15	Admirals Fm, Great Bentley	Figure 3.7	Figure 4.7	Figure 7.7	✗
A16	Church Farm, Alresford	Figure 3.7	Figure 4.7	Figure 7.7	✓
A17	Frating Hall Farm, Frating	Figure 3.7	Figure 4.7	Figure 7.7	✗
A18	Gurnhams, Little Bentley	Figure 3.7	Figure 4.7	Figure 7.7	✓
A19	Lodge Farm, Alresford	Figure 3.7	Figure 4.7	Figure 7.7	✗
A20	Sunnymead, Elmstead & Heath Farms, Alresford	Figure 3.7	Figure 4.7	Figure 7.7	✓
A21	Thorrington Hall Farm, Thorrington	Figure 3.7	Figure 4.7	Figure 7.7	✓
A22	Little Bullocks Farm, Canfield – Area A	Figure 3.1	Figure 4.1	Figure 7.1	✓
A23	Little Bullocks Farm, Canfield – Area B	Figure 3.1	Figure 4.1	Figure 7.1	✗
A25	Elsenham Quarry, Elsenham	Figure 3.1	Figure 4.1	Figure 7.1	✗
A26	Frogs Hall, Takeley	Figure 3.1	Figure 4.1	Figure 7.1	✓
A27	Land at Ugley, Ugley	Figure 3.1	Figure 4.1	Figure 7.1	✓
A28	Tower Field Western Extension, Fingringhoe	Figure 3.7	Figure 4.7	Figure 7.7	✗
A29	30 Acre Field West, Fingringhoe	Figure 3.7	Figure 4.7	Figure 7.7	✗

A30	30 Acre Field South, Fingringhoe	Figure 3.7	Figure 4.7	Figure 7.7	✘
A31	Birch Extraction, Colchester	Figure 3.6	Figure 4.6	Figure 7.6	✓
A33	Armigers Farm	Figure 3.1	Figure 4.1	Figure 7.1	✘
A34	Thorrington Hall Farm	Figure 3.7	Figure 4.7	Figure 7.7	✓
A35	Tyndales Farm, Danbury	Figure 3.5	Figure 4.5	Figure 7.5	✘
A36	Olivers Nurseries	Figure 3.5	Figure 4.5	Figure 7.5	✘
A37	Alsteads Farm	Figure 3.4	Figure 4.4	Figure 7.4	✘
A38	Blackley Quarry, Gate Farm Site 1	Figure 3.4	Figure 4.4	Figure 7.4	✘
A39	Blackley Quarry, Gate Farm, Site 2	Figure 3.4	Figure 4.4	Figure 7.4	✘
A40	Shellow Cross Farm	Figure 3.2	Figure 4.2	Figure 7.2	✓
A41	Patch Park Farm	Figure 3.3.1	Figure 4.3.1	Figure 7.3.1	✓
A43	Parkgate Farm West	Figure 3.6	Figure 4.6	Figure 7.6	✘
A44	White House Farm	Figure 3.5	Figure 4.5	Figure 7.5	✓
A45	Ardleigh Site A	Figure 3.7	Figure 4.7	Figure 7.7	✓
A46	Colemans Farm	Figure 3.6	Figure 4.6	Figure 7.6	✓
B1	Slough Fm, Ardleigh - Area 1	Figure 3.7	Figure 4.7	Figure 7.7	✘
B3	Slough Fm, Ardleigh - Area 3	Figure 3.7	Figure 4.7	Figure 7.7	✘
D2	Ballast Quay, Fingringhoe	Figure 3.7	Figure 4.7	Figure 7.7	✓
D3	Sadds Wharf, Maldon	Figure 3.5	Figure 4.5	Figure 7.5	✓
D5	Brightlingsea Quarry Wharf	Figure 3.7	Figure 4.7	Figure 7.7	✓
D6	Ardleigh Transhipment Site	Figure 3.7	Figure 4.7	Figure 7.7	✘



LEGEND

-  Essex County Boundary
-  A123 Non-Selected Site
-  A123 Preferred Site

Groundwater Vulnerability

-  Major Aquifer
-  Minor Aquifer
-  Source Protection Zone

COPYRIGHT


This map is reproduced from Ordnance Survey material with the permission of Ordnance Survey on behalf of the controller of Her Majesty's Stationery Office © Crown copyright. Unauthorised reproduction infringes Crown copyright and may lead to prosecution or civil proceedings. Essex County Council Licence No. 100019602, 2011. Some features of this map are based on information provided by the Environment Agency. Copyright © Environment Agency 2011.

DRAWN BY RJ	CHECKED BY SR	PASSED BY SR	DATE NOV 2012
----------------	------------------	-----------------	------------------

SCALE @ A3 1 : 250,000	ISSUING OFFICE London
---------------------------	--------------------------

MINERALS LOCAL PLAN LEVEL 1
STRATEGIC FLOOD RISK ASSESSMENT
[REVISION NOV 2012]

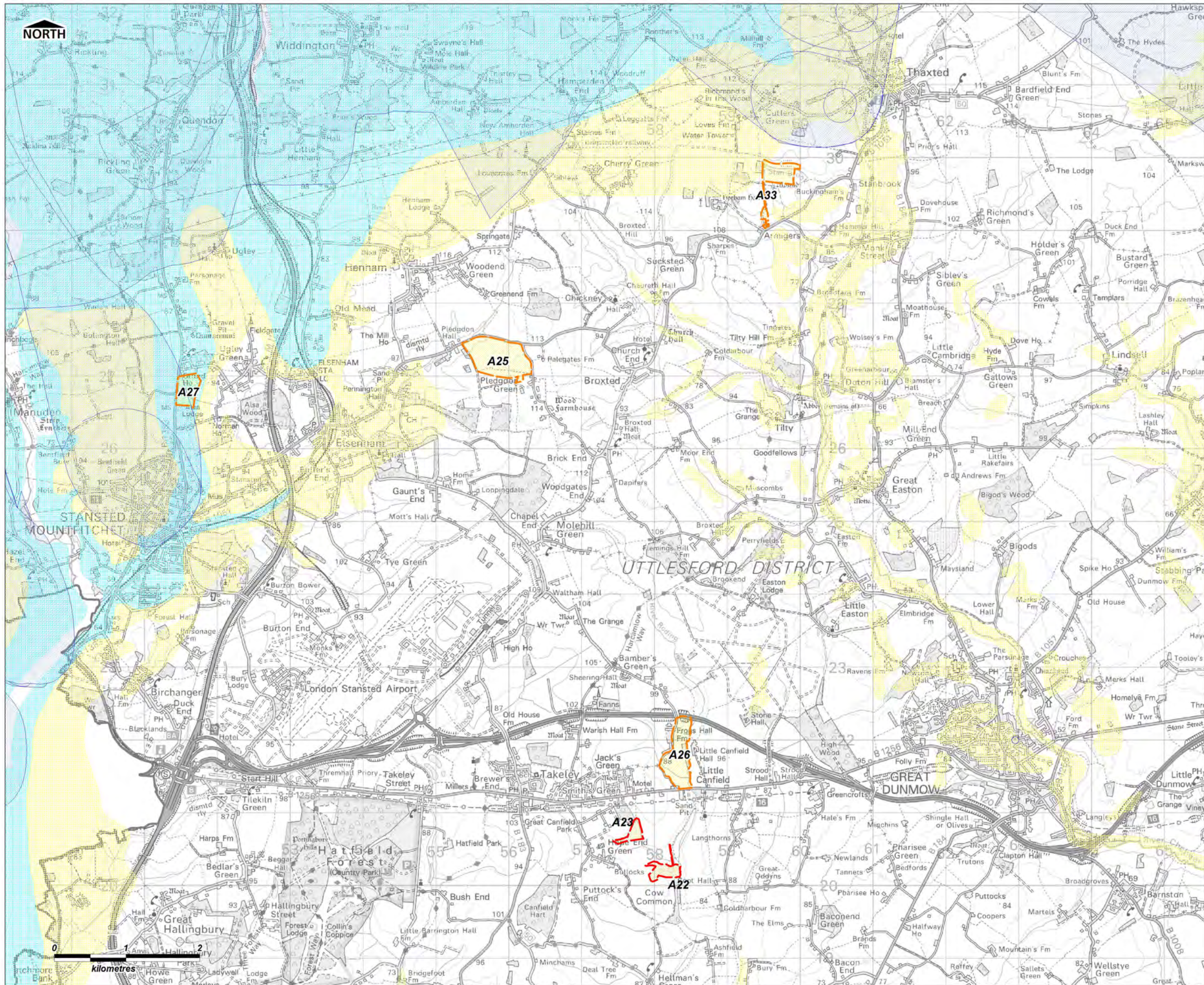
**GROUNDWATER VULNERABILITY
& SOURCE PROTECTION ZONES**

 Essex County Council
County Hall
Market Road
Chelmsford, CM1 1QH

URS Infrastructure and Environment UK Ltd
6-8 Greencoat Place
London, SW1P 1PL
Tel: (020) 7798 5000



DRAWING NUMBER
FIGURE 6.0



LEGEND

-  Essex County Boundary
-  Non-Selected Site
-  Preferred Site

Groundwater Vulnerability

-  Major Aquifer
-  Minor Aquifer
-  Source Protection Zone




COPYRIGHT
 This map is reproduced from Ordnance Survey material with the permission of Ordnance Survey on behalf of the controller of Her Majesty's Stationary Office © Crown copyright. Unauthorised reproduction infringes Crown copyright and may lead to prosecution or civil proceedings. Essex County Council Licence No. 100019602, 2011.
 Some features of this map are based on information provided by the Environment Agency. Copyright © Environment Agency 2011.


DRAWN BY RJ	CHECKED BY SR	PASSED BY SR	DATE NOV 2012
SCALE @ A3 1 : 50,000		ISSUING OFFICE London	

**MINERALS LOCAL PLAN LEVEL 1
 STRATEGIC FLOOD RISK ASSESSMENT
 [REVISION NOV 2012]**

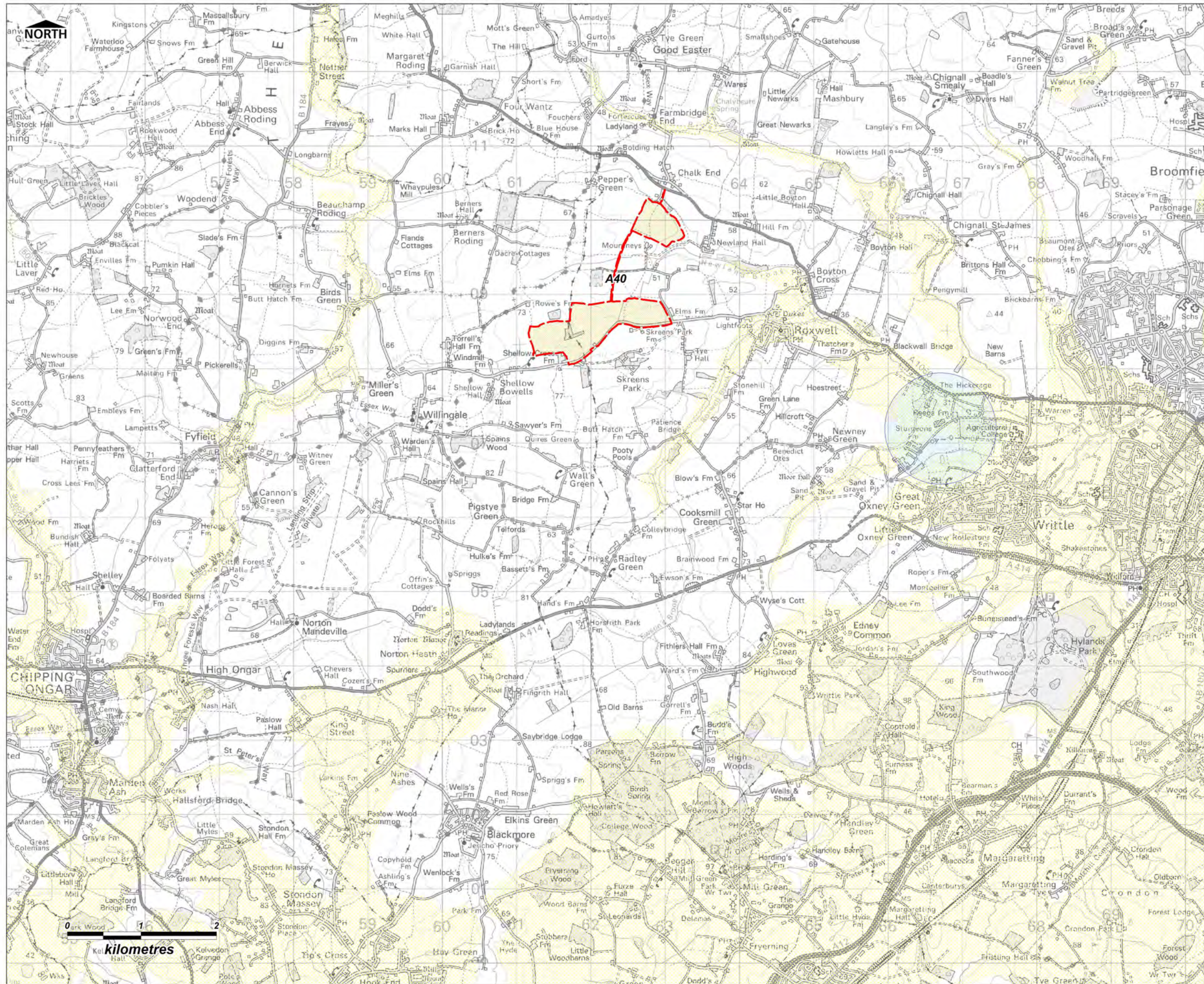
**GROUNDWATER VULNERABILITY
 & SOURCE PROTECTION ZONES**

 Essex County Council
 County Hall
 Market Road
 Chelmsford, CM1 1QH

URS Infrastructure and Environment UK Ltd
 6-8 Greencoat Place
 London, SW1P 1PL
 Tel: (020) 7798 5000



DRAWING NUMBER
FIGURE 6.1



LEGEND

- Essex County Boundary
- Non-Selected Site
- Preferred Site

Groundwater Vulnerability

- Major Aquifer
- Minor Aquifer
- Source Protection Zone



COPYRIGHT
 This map is reproduced from Ordnance Survey material with the permission of Ordnance Survey on behalf of the controller of Her Majesty's Stationery Office © Crown copyright. Unauthorised reproduction infringes Crown copyright and may lead to prosecution or civil proceedings. Essex County Council Licence No. 100019602, 2011.
 Some features of this map are based on information provided by the Environment Agency. Copyright © Environment Agency 2011.

DRAWN BY	CHECKED BY	PASSED BY	DATE
RJ	SR	SR	NOV 2012

SCALE @ A3	ISSUING OFFICE
1 : 50,000	London

**MINERALS LOCAL PLAN LEVEL 1
 STRATEGIC FLOOD RISK ASSESSMENT
 [REVISION NOV 2012]**

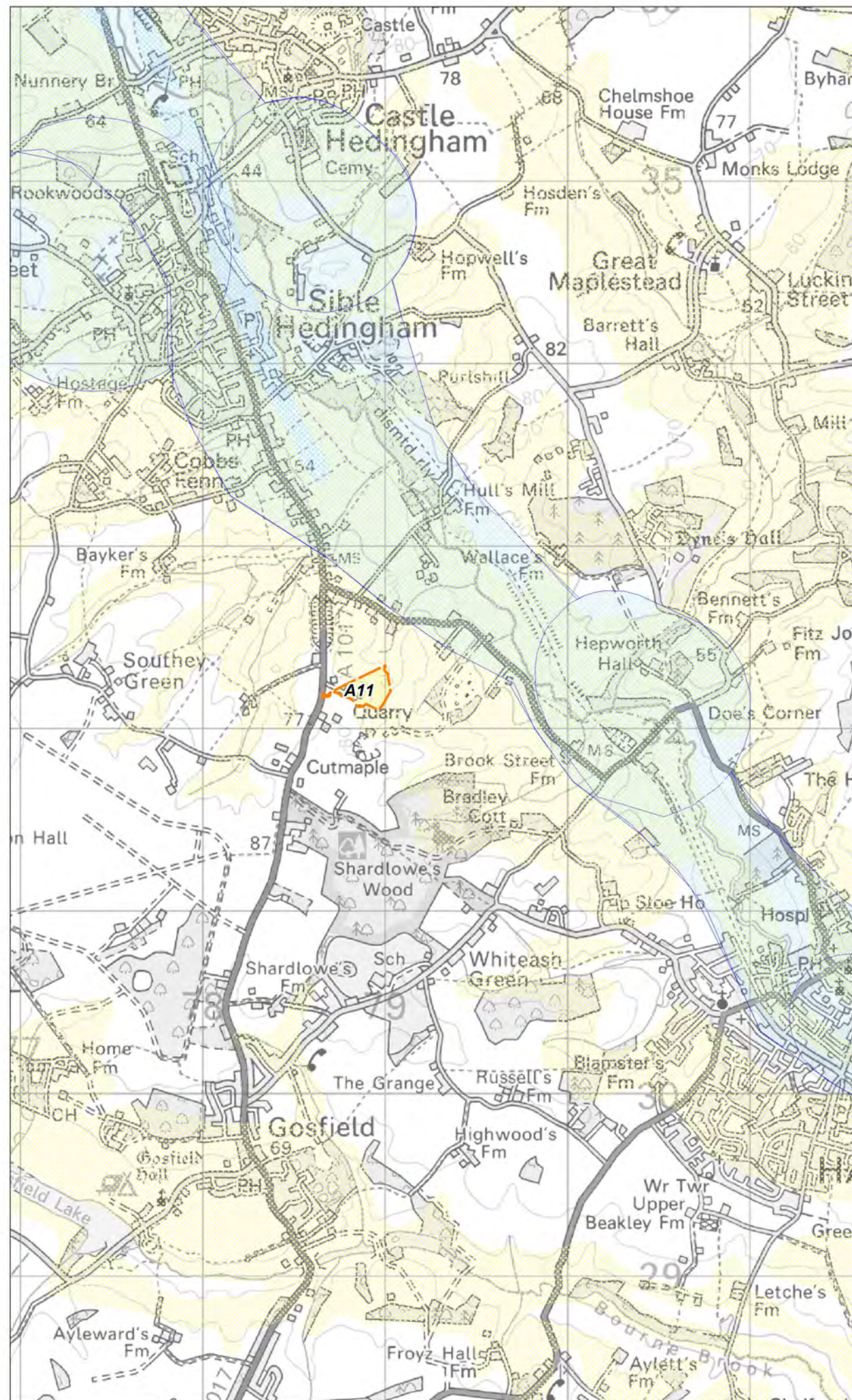
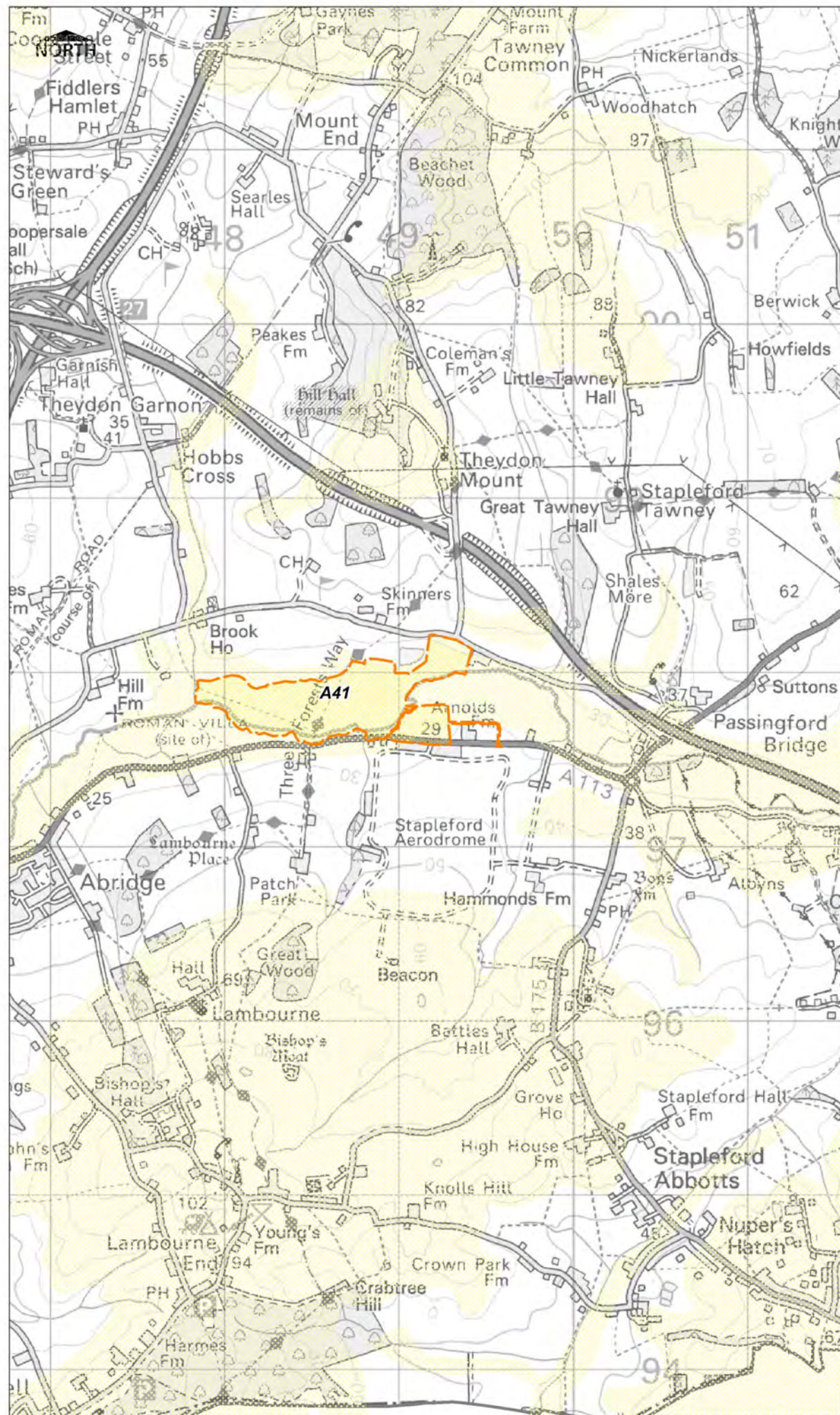
**GROUNDWATER VULNERABILITY
 & SOURCE PROTECTION ZONES**

Essex County Council
 County Hall
 Market Road
 Chelmsford, CM1 1QH

URS Infrastructure and Environment UK Ltd
 6-8 Greencoat Place
 London, SW1P 1PL
 Tel: (020) 7798 5000

DRAWING NUMBER

FIGURE 6.2



- LEGEND**
- Essex County Boundary
 - Non-Selected Site
 - Preferred Site

- Groundwater Vulnerability**
- Major Aquifer
 - Minor Aquifer
 - Source Protection Zone



COPYRIGHT
 This map is reproduced from Ordnance Survey material with the permission of Ordnance Survey on behalf of the controller of Her Majesty's Stationery Office © Crown copyright. Unauthorised reproduction infringes Crown copyright and may lead to prosecution or civil proceedings. Essex County Council Licence No. 100019602, 2011.
 Some features of this map are based on information provided by the Environment Agency. Copyright © Environment Agency 2011.

DRAWN BY RJ	CHECKED BY SR	PASSED BY SR	DATE NOV 2012
SCALE @ A3 1 : 30,000		ISSUING OFFICE London	

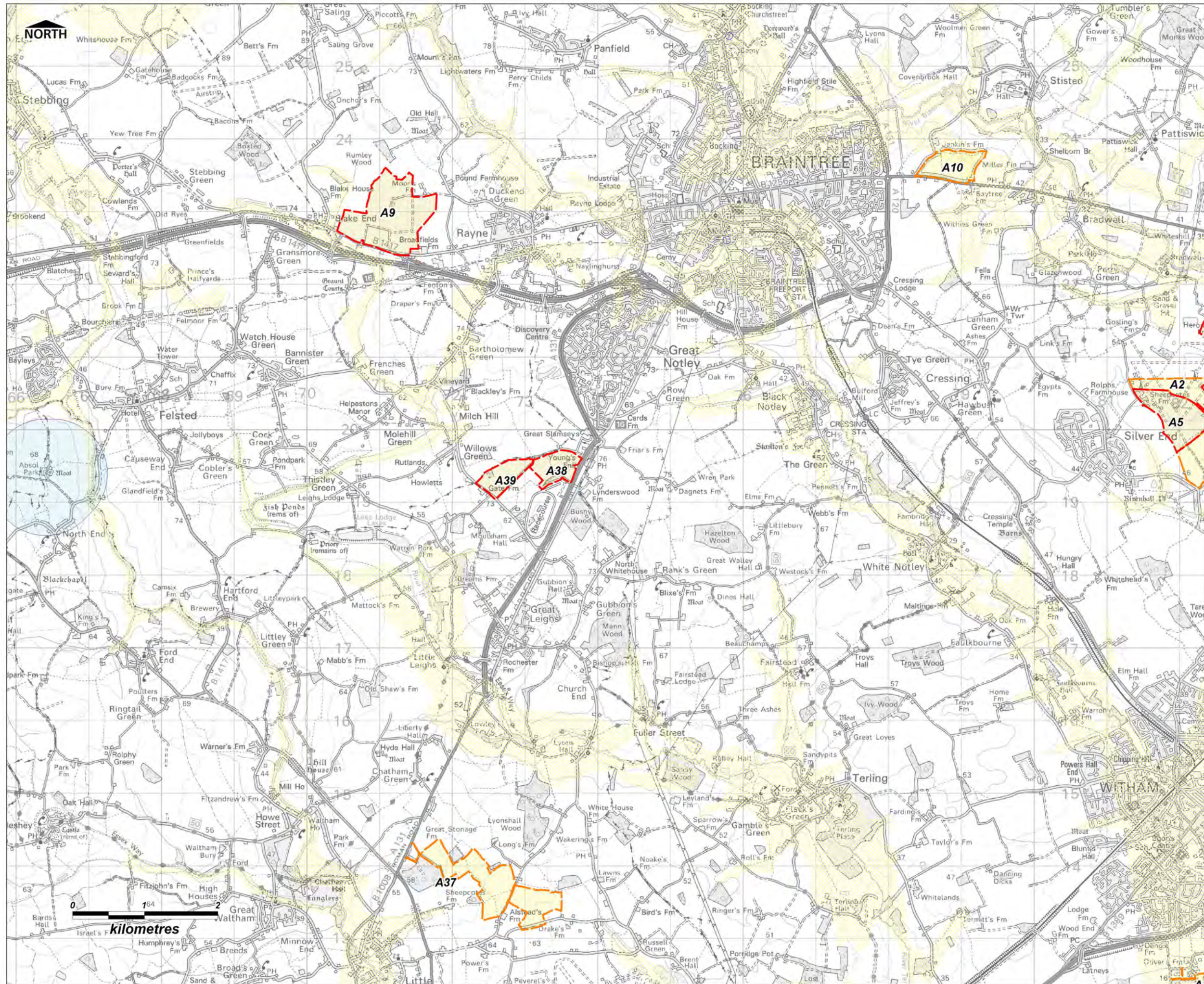
**MINERALS LOCAL PLAN LEVEL 1
 STRATEGIC FLOOD RISK ASSESSMENT
 [REVISION NOV 2012]**

**GROUNDWATER VULNERABILITY
 & SOURCE PROTECTION ZONES**

Essex County Council
 County Hall
 Market Road
 Chelmsford, CM1 1QH

URS Infrastructure and Environment UK Ltd
 6-8 Greencoat Place
 London, SW1P 1PL
 Tel: (020) 7798 5000

DRAWING NUMBER
FIGURE 6.3



- LEGEND**
- Essex County Boundary
 - Non-Selected Site
 - Preferred Site

- Groundwater Vulnerability**
- Major Aquifer
 - Minor Aquifer
 - Source Protection Zone



COPYRIGHT
 This map is reproduced from Ordnance Survey material with the permission of Ordnance Survey on behalf of the controller of Her Majesty's Stationery Office © Crown copyright. Unauthorised reproduction infringes Crown copyright and may lead to prosecution or civil proceedings. Essex County Council Licence No. 100019602, 2011.
 Some features of this map are based on information provided by the Environment Agency. Copyright © Environment Agency 2011.

DRAWN BY RJ	CHECKED BY SR	PASSED BY SR	DATE NOV 2012
SCALE @ A3 1 : 50,000		ISSUING OFFICE London	

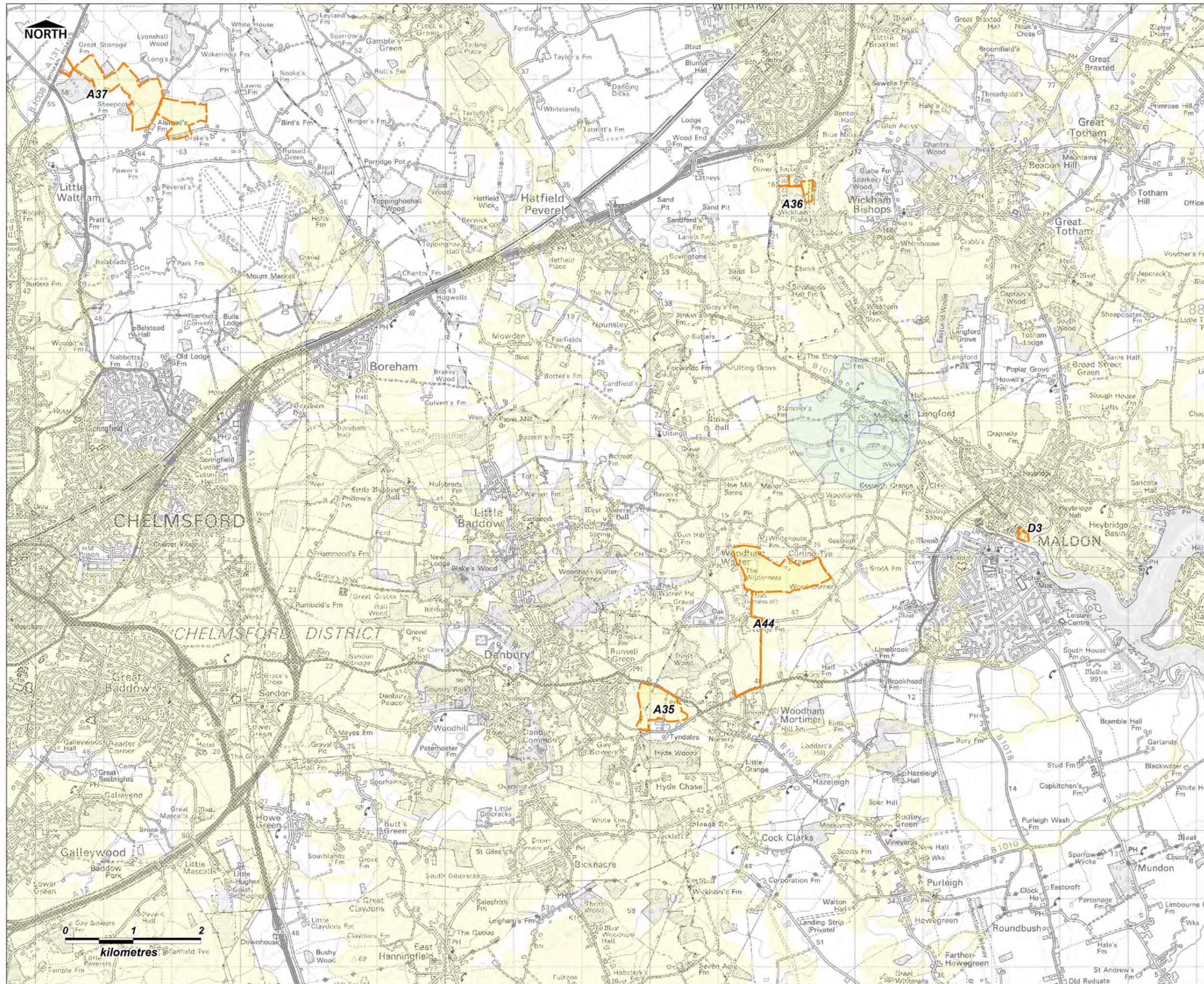
**MINERALS LOCAL PLAN LEVEL 1
 STRATEGIC FLOOD RISK ASSESSMENT
 [REVISION NOV 2012]**

**GROUNDWATER VULNERABILITY
 & SOURCE PROTECTION ZONES**

Essex County Council
 County Hall
 Market Road
 Chelmsford, CM1 1QH

URS Infrastructure and Environment UK Ltd
 6-8 Greencoat Place
 London, SW1P 1PL
 Tel: (020) 7798 5000

DRAWING NUMBER
FIGURE 6.4



LEGEND

- Essex County Boundary
- Non-Selected Site
- Preferred Site

Groundwater Vulnerability

- Major Aquifer
- Minor Aquifer
- Source Protection Zone



COPYRIGHT
 This map is reproduced from Ordnance Survey material with the permission of Ordnance Survey on behalf of the controller of Her Majesty's Stationery Office © Crown copyright. Unauthorised reproduction infringes Crown copyright and may lead to prosecution or civil proceedings. Essex County Council Licence No. 100019602, 2011.
 Some features of this map are based on information provided by the Environment Agency. Copyright © Environment Agency 2011.

DRAWN BY RJ	CHECKED BY SR	PASSED BY SR	DATE NOV 2012
SCALE @ A3 1 : 50,000		ISSUING OFFICE London	

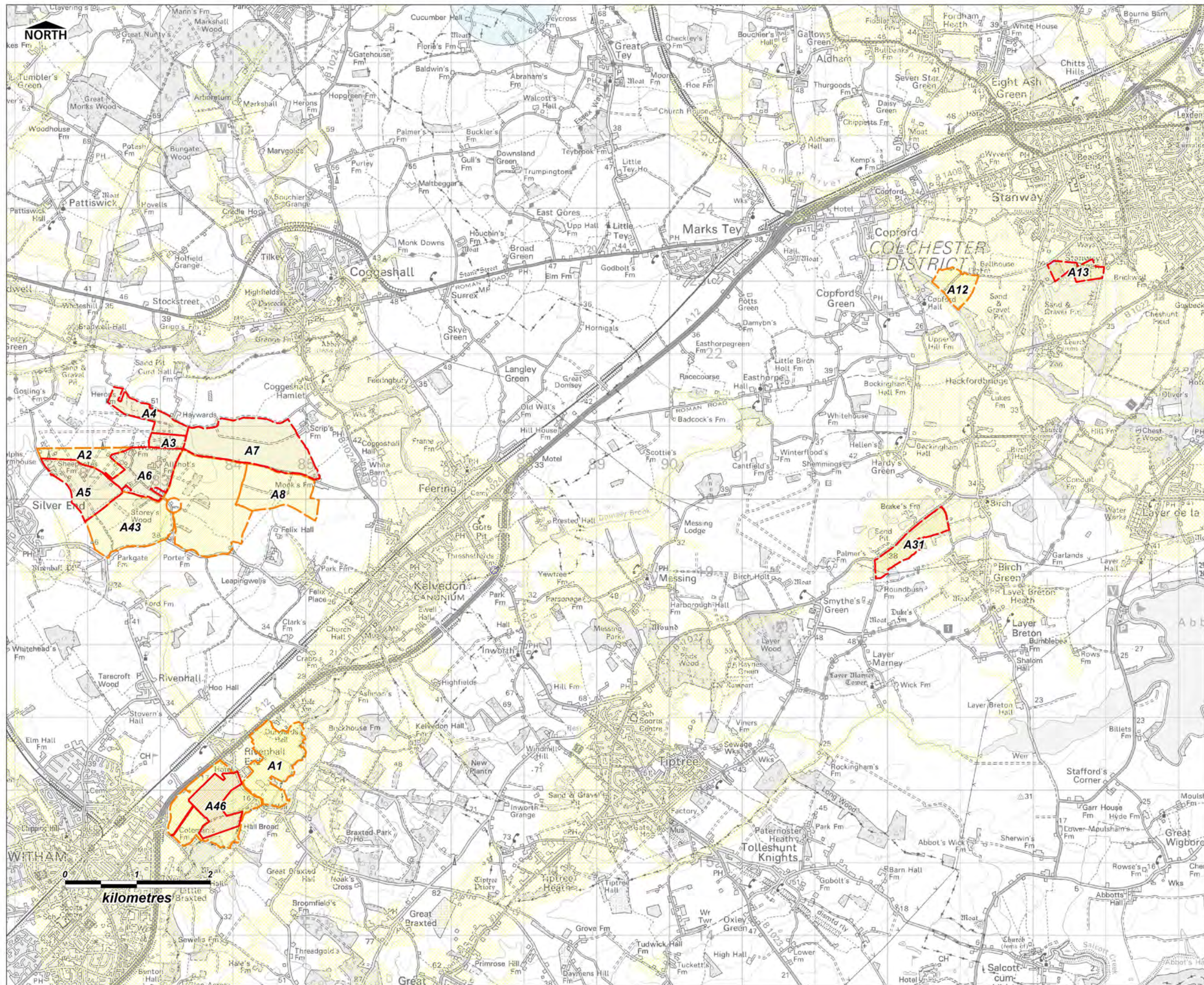
**MINERALS LOCAL PLAN LEVEL 1
 STRATEGIC FLOOD RISK ASSESSMENT
 [REVISION NOV 2012]**

**GROUNDWATER VULNERABILITY
 & SOURCE PROTECTION ZONES**

Essex County Council
 County Hall
 Market Road
 Chelmsford, CM1 1QH

URS Infrastructure and Environment
 6-8 Greencoat Place
 London, SW1P 1PL
 Tel: (020) 7798 5000

DRAWING NUMBER
FIGURE 6.5



LEGEND

-  Essex County Boundary
-  Non-Selected Site
-  Preferred Site

Groundwater Vulnerability

-  Major Aquifer
-  Minor Aquifer
-  Source Protection Zone




COPYRIGHT
 This map is reproduced from Ordnance Survey material with the permission of Ordnance Survey on behalf of the controller of Her Majesty's Stationery Office © Crown copyright. Unauthorised reproduction infringes Crown copyright and may lead to prosecution or civil proceedings. Essex County Council Licence No. 100019602, 2011.
 Some features of this map are based on information provided by the Environment Agency. Copyright © Environment Agency 2011.

DRAWN BY	CHECKED BY	PASSED BY	DATE
RJ	SR	SR	NOV 2012


SCALE @ A3	ISSUING OFFICE
1 : 50,000	London

**MINERALS LOCAL PLAN LEVEL 1
 STRATEGIC FLOOD RISK ASSESSMENT
 [REVISION NOV 2012]**

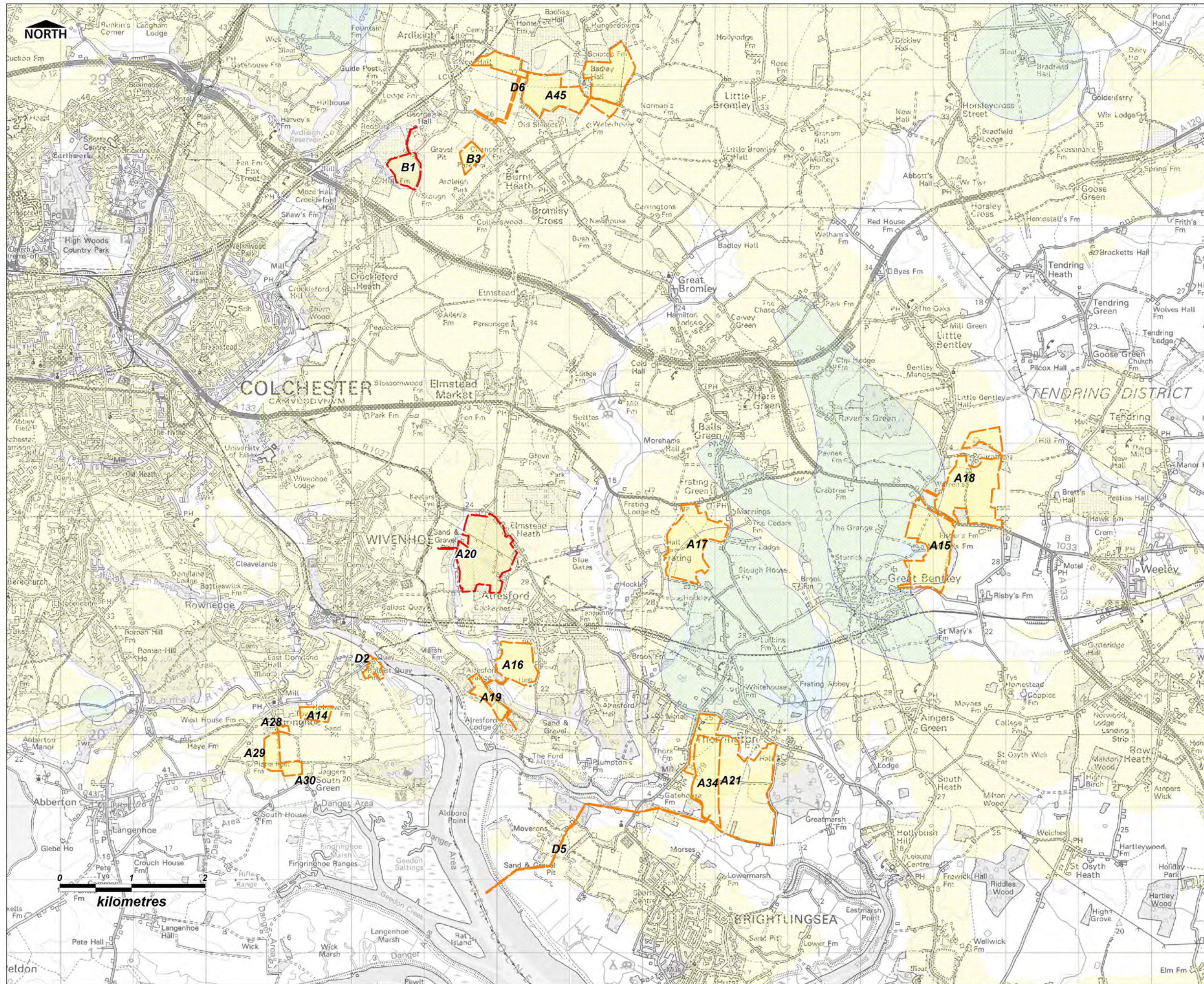
**GROUNDWATER VULNERABILITY
 & SOURCE PROTECTION ZONES**

 Essex County Council
 County Hall
 Market Road
 Chelmsford, CM1 1QH

URS Infrastructure and Environment UK Ltd
 6-8 Greencoat Place
 London, SW1P 1PL
 Tel: (020) 7798 5000



DRAWING NUMBER
FIGURE 6.6



LEGEND

- Essex County Boundary
- Non-Selected Site
- Preferred Site

Groundwater Vulnerability

- Major Aquifer
- Minor Aquifer
- Source Protection Zone



COPYRIGHT
 This map is reproduced from Ordnance Survey material with the permission of Ordnance Survey on behalf of the controller of Her Majesty's Stationery Office © Crown copyright. Unauthorised reproduction infringes Crown copyright and may lead to prosecution or civil proceedings. Essex County Council Licence No. 100019602, 2011.
 Some features of this map are based on information provided by the Environment Agency. Copyright © Environment Agency 2011.

DRAWN BY	CHECKED BY	PASSED BY	DATE
RJ	SR	SR	NOV 2012

SCALE @ A3
 1 : 50,000
 ISSUING OFFICE
 London

**MINERALS LOCAL PLAN LEVEL 1
 STRATEGIC FLOOD RISK ASSESSMENT
 [REVISION NOV 2012]**

**GROUNDWATER VULNERABILITY
 & SOURCE PROTECTION ZONES**

Essex County Council
 County Hall
 Market Road
 Chelmsford, CM1 1QH

URS Infrastructure and Environment UK Ltd
 6-8 Greencoat Place
 London, SW1P 1PL
 Tel: (020) 7798 5000

DRAWING NUMBER
FIGURE 6.7